



## BRIEF INFORMATION

### Q110R

- › Stylish appearance and compact design
- › Low weight and high corrosion resistance thanks to plastic materials used
- › ADR / GGVSEB certified for hazardous goods transport

## PRODUCT FEATURES

### **Powerful reverse lamp in an elegant dark design**

The new Q110R reverse lamp combines modern design with a high degree of functionality. Its dark housing gives it a sophisticated look, while the robust design has been optimised for use in demanding conditions. With a light output of 1,150 lumens at just 11 watts, the reverse lamp impresses with its high energy efficiency and excellent illumination.

Thanks to the plastic bracket and housing, the Q110R offers high corrosion resistance, making it particularly durable and resistant. It is ADR / GGVSEB certified, which makes it ideal for use when transporting hazardous goods. In addition, the 20° inclination enables, comparatively speaking, particularly space-saving mounting.

Whether off-road or on the public highway – this reverse lamp ensures reliable lighting and a safe environment for every application.

# TECHNICAL DETAILS

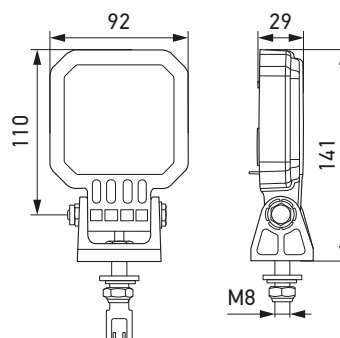
## Technical data

Operating voltage range	10–32 V
Rated voltage	12 V and 24 V
Rated voltage	12 V: Ø 0.81 A* 24 V: Ø 0.39 A**
Power consumption	11 W
Light output (warm)	1,150 lm
Light source	LED
Colour temperature	5,700 K
Material	Housing: heat-conductive plastic
Temperature range	- 40 °C to + 85 °C (overheating protection)
Protection class	IP 6K7, IP 6K9K
Approved	ECE-R10, ECE-R148, ADR/GGVSEB
Compliant	RCM
Protection	Polarity reversal protection, overvoltage protection
Mounting	Upright and pendant

\* Measured warm at 13.2 V after 30 minutes in operation.

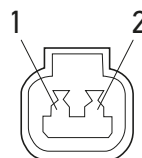
\*\* Measured warm at 28 V after 30 minutes in operation.

## Dimensional sketch



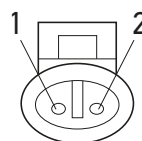
## Pin allocation

### DT connector



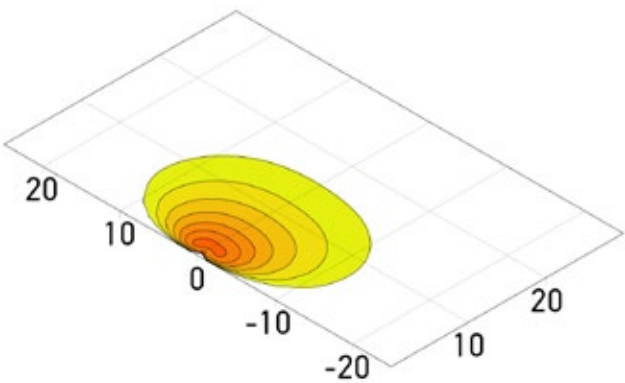
Pin 1: Power supply, white  
Pin 2: Earth, black

### AMP connector



Pin 1: Earth, white  
Pin 2: Power supply, black

# LIGHT DISTRIBUTION




Extra wide illumination

lux >= 0 1 2 4 8 16 32 64 128 192 256

Mounting position: 1.2 m high at 20° (extra wide illumination)

# PROGRAM OVERVIEW

Product image	Connection	Part number
	1,000 mm cable and DEUTSCH DT connector	2ZR 996 285-501
	1,000 mm cable and AMP connector	2ZR 996 285-601
	2,000 mm cable and AMP connector	2ZR 996 285-617
	3,000 mm cable and AMP connector	2ZR 996 285-627