



Technology with Vision

UNIVERSAL LIGHTING

2021





CONTENT

Quality checks – HELLA quality at a glance	4	HELLA VALUEFIT Beacons	19
IP degree of protection: Safety when buying	5	The ECE R65 Directive	19
Technical questions answered with ease –		Beacons	20
What do watts, kelvin, lumens and lux mean?	6	Micro/Mini Light Bars	20
COMPACT series	6	Mobile warning lamps for car drivers	21
Illumination of the working area –		Warning lamps	22
How is homogeneous illumination achieved?	7	Rear lamps	24
Work lamps	7	Reverse lamps	26
Fact vs. fiction – The truth about lumens	8	Reverse lamps – function and safety	
Using lumens as a "currency" for headlamp quality		It's all about the marking	27
is wrong!	8	Reverse lamps	28
HELLA VALUEFIT compared	9	HELLA VALUEFIT Reverse lamps	29
HELLA VALUEFIT Work lamps	10	Single-function lamps	30
Thermal management system	11	HELLA VALUEFIT Single-function lamps	32
Work lamps/off-road	12	Order number overview	33
Auxiliary high beam headlamps	14	Online information – product identification made easy	38
HELLA VALUEFIT Auxiliary high beam headlamps	15	Social Media	39
Auxiliary high beam headlamps	16		
What does the reference figure say? What does the			
Isolux diagram show?	17		
Beacons	18		



12 V

Passenger cars
For individual traffic



12 V

Off-road car/off-road vehicles
For adventures off paved roads and paths



12 V

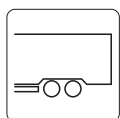
Vans
Under 3.5 t



12 V

24 V

Truck/lorry



Trailers
Trailers and semi-trailers for lorries



12 V

24 V

Agricultural machinery
Agricultural machinery such as tractors, working machines and harvesting machines



Forklifts

HELLA VALUEFIT

PROVEN QUALITY AT A
GREAT PRICE

With the HELLA VALUEFIT universal lighting products, such as the auxiliary and work lamps, HELLA offers you products that are tailored to your requirements. All HELLA VALUEFIT products meet the relevant technical specifications, they are safe and reliable, and they also make it possible to change over to LED for a low price.

QUALITY TEST

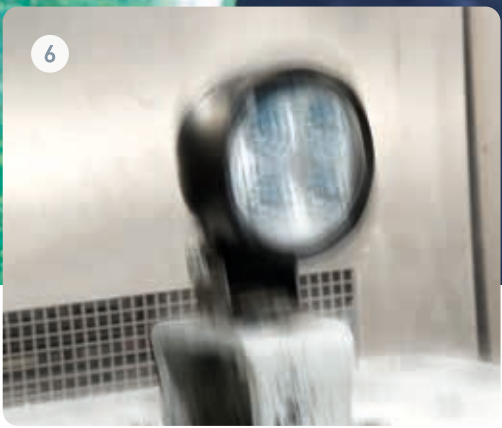
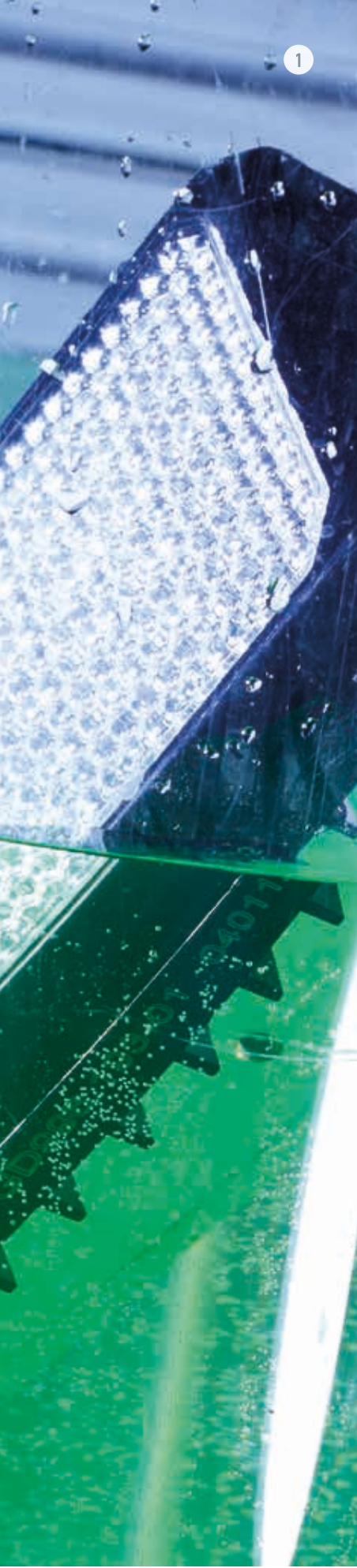
HELLA QUALITY AT A GLANCE

HELLA defines demanding quality criteria that apply throughout the entire manufacturing process. Therefore, before the products are put on the market, they are subjected to the toughest conditions in various test procedures. All products undergo extensive testing procedures in accordance with HELLA's own standard 67001. This guarantees the high level of HELLA quality that you can always rely on.

QUALITY TESTS

- 1 **Immersion and pressure tightness test** | HELLA LED products have a high level of tightness so that no water can penetrate the devices.
- 2 **Dust test** | HELLA LED products are very dustproof to protect sensitive components from dust.
- 3 **Spray water test** | HELLA LED products are splashwater-proof.
- 4 **Heat, humidity and cold test** | HELLA LED products defy strong temperature fluctuations and changing humidity.
- 5 **High-pressure jet cleaner test** | HELLA LED products can be cleaned using a high-pressure jet cleaner without a problem.
- 6 **Vibration test** | HELLA LED products offer guaranteed high resistance to vibrations.





IP DEGREE OF PROTECTION: SAFETY WHEN BUYING

IP stands for International Protection

The standard exists to specify the protection of electrical equipment against the ingress of solid or liquid foreign bodies such as dust or water on a standardised basis. The degree of protection is determined by a series of tests, also standardised, to determine how well a product is protected against environmental influences.

The degrees of protection are determined in accordance with DIN 40 050 Part 9. Work lamps, for example, are designed for different degrees of protection:

Degree of protection IP 6K7

Dust must not penetrate. Even during temporary immersion, no water is to penetrate.

Degree of protection IP 6K8

Dust must not penetrate. Protection against continuous immersion.

Degree of protection IP 6K9K

Dust must not penetrate. Water that is directed onto the housing during high pressure/steamjet cleaning must not have any harmful effects: the water pressure is approx. 100 bar.

First digit:
Protection against ingress
of solid foreign bodies
(dust)

IP 6K7

Second digit:
Protection against liquid
(water)

ILLUMINATION OF THE WORKING AREA

HOW IS HOMOGENEOUS ILLUMINATION ACHIEVED?



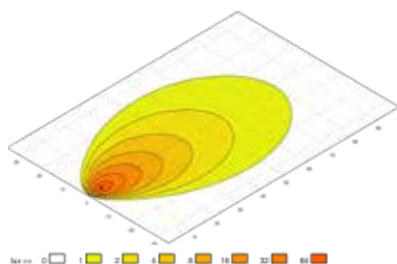
TECHNICAL QUESTIONS ANSWERED WITH EASE – WHAT DO WATTS, KELVIN, LUMENS AND LUX MEAN?

Watt (W) | Unit of measurement for the power consumption of a headlamp.

Kelvin (K) | Unit of colour temperature, the higher the value the "whiter"/more like daylight the light is. Important: Anything above 7,000 Kelvin is too bright for the human eye and causes glare.

Lumen (lm) | The amount of light a lamp emits, but in all directions. Important: Distinction between measured lumens and calculated lumens. This brochure only provides real measured light values.

Lux (lx) | This value is decisive for the illumination of the working area. The aim of light development is to get as much light as possible onto the ground. Computer-calculated reflector surfaces are used for this purpose. They focus the light and thus create homogeneous illumination.



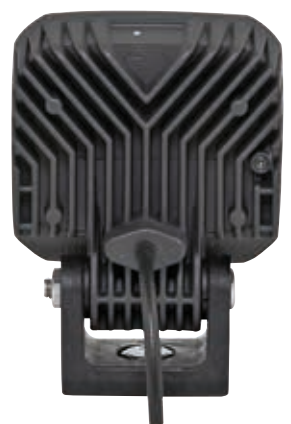
Isolux diagrams are used to compare illuminations. The illuminance is measured with a luxmeter to determine whether a work surface is sufficiently illuminated.

COMPACT SERIES

A HELLA innovation | The innovative plastic material of the COMPACT series boasts similar thermal conductivity properties to aluminium, but special heat-conducting plastics are used instead of aluminium cooling elements. These plastics perfectly dissipate the heat from the LEDs, ensuring a long service life. This allows the LEDs to operate using the full power supply even at high ambient temperatures.

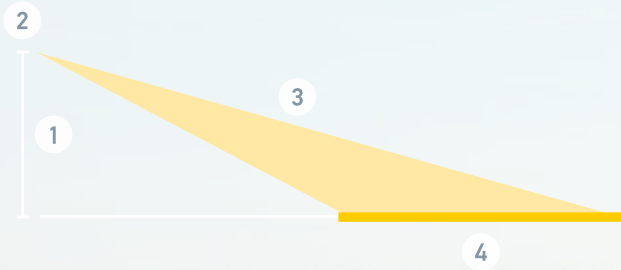
The benefits:

- Ideal in conditions that pose a high risk of corrosion e. g. via salt that would corrode a plastic housing
- Optimal vibration behaviour thanks to reduced weight
- Plastic material is resistant to external factors such as dust, dirt and water (IP 6K9K/IP 6K7 degrees of protection, HELLA minimum standard)



The high-performance LEDs enable the work lamp to last for up to 60,000 hours.

Homogenous illumination of the work area can be achieved through a combination of various factors. The interplay between the following factors is vital to achieving the right light pattern for the application area.



1 Mounting height: The light pattern and illumination vary at different surface mounting heights. The optimal surface mounting height is > 2.5 m.

- 2** Reflector system: The reflectors of HELLA work lamps are calculated in such a way to ensure that the working area is evenly illuminated and the light optimally used.
- 3** Tilt angle: Changes to the work lamp angle completely change the illumination. The tilt angle should be between 2° and 15° depending on the application.
- 4** Illuminated area: Depending on the application, combining close-range and long-range illumination can provide an ideal lighting solution for everyday work.

The advantages are increased safety, because the surroundings and potential obstacles or danger spots can be detected more quickly, and increased efficiency at work, because the body is subjected to less strain, allowing workers to stay focused for longer.

WORK LAMPS



Ultra Beam LED
(Gen. 2)

Upright/pendant surface mounting, multi-voltage 9 – 32 V, 8 LEDs, power consumption 50 W, light output 4,400 lm, degree of protection IP 6K9K/IP 6K8, ECE R10 approval, CISPR 25 Class 5, DEUTSCH DT connection

W x H x D 115 mm x 132 mm x 85 mm

- 1GA 995 606-001 Close-range illumination
- 1GA 995 606-011 Long-range illumination



Power Beam 1800 LED compact

Upright/pendant surface mounting, multi-voltage 10.5 – 32 V, 6 LEDs, power consumption 26 W, light output 1,850 lm, degree of protection IP 6K9K/IP 6K8, ECE R10 approval, CISPR 25 Class 5, DEUTSCH DT connection, heat conductive plastic housing

W x H x D 112 mm x 126 mm x 68 mm

- 1GA 996 488-001 Close-range illumination
- 1GA 996 488-011 Long-range illumination



Q90 LED compact

Upright/pendant surface mounting, multi-voltage 9 – 32 V, 4 LEDs, power consumption 15 W, light output 1,200 lm, degree of protection IP 6K9K/IP 6K7, ECE R10 approval, CISPR 25 Class 5, connection 500 mm cable, heat conductive plastic housing

W x H x D 95 mm x 122 mm x 65 mm

- 1GA 996 284-001 Close-range illumination
- 1GA 996 284-011 Long-range illumination



S series Power Beam

NEW

Upright/pendant surface mounting, multi-voltage 9 – 32 V, degree of protection IP 6K9K/IP 6K7, ECE R10 approval, CISPR 25 Class 5, DEUTSCH DT connection, plastic housing

W x H x D 112 mm x 127 mm x 87 mm

- ~ 1,000 lm/~ 12 W/2 LEDs
- 1GA 996 588-001 Close-range illumination
- 1GA 996 588-011 Long-range illumination
- ~ 1,850 lm/~ 19 W/4 LEDs
- 1GA 996 588-201 Close-range illumination
- 1GA 996 588-211 Long-range illumination



70 S series module

NEW

Upright/pendant surface mounting, multi-voltage 9 – 32 V, degree of protection IP 6K9K/IP 6K7, ECE R10 approval, CISPR 25 Class 5, DEUTSCH DT connection, plastic housing

W x H x D 83 mm x 114 mm x 64 mm

- ~ 1,000 lm/~ 12 W/2 LEDs
- 1G0 996 776-001 Close-range illumination
- 1G0 996 776-011 Long-range illumination
- ~ 1,850 lm/~ 19 W/4 LEDs
- 1G0 996 776-201 Close-range illumination
- 1G0 996 776-211 Long-range illumination





FACT VS. FICTION THE TRUTH ABOUT LUMENS

The luminous flux of work lamps is measured in lumens. The lumen value is one of the decisive factors when choosing a particular LED work lamp. What some manufacturers do not tell you is that the high lumen specifications on their packaging are "calculated" lumens and not "measured" lumens.

USING LUMENS AS A "CURRENCY" FOR THE QUALITY OF A HEADLAMP IS WRONG!

With the change to LED technology, the term "lumen" – the unit of measurement for the intensity of a light – was hyped so much that a sort of "battle of the lumens" has been taking place ever since. In this battle, the terms "calculated lumens" and "measured lumens" are used often.

What are they?

HELLA provides the "measured" lumen value, meaning that it provides a reliable value for the actual light intensity. The lumen value not only stems from the LED used, but from all components of the headlamp involved.

PLAIN LANGUAGE

This means that, for many competitors, up to 50 % of the lumen value should be deducted. In most cases, the lumen values of the individual LEDs are added together. The sum is indicated as light output, which does not correspond to the measured light output.



From here, some competitors calculate the light output without taking system losses into account (= calculated lumens).

HELLA measures the total effective light output here, which is also promised (= measured lumens).

Each work lamp suffers output losses due to the following:

- 1 Electronic components and LEDs transform energy to heat: 25–35% losses
- 2 Reflector or lens system: 5–15% losses

i Calculated lumens ≠ Measured lumens



HELLA VALUEFIT COMPARED

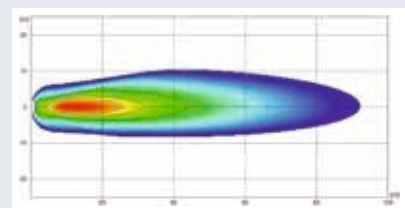
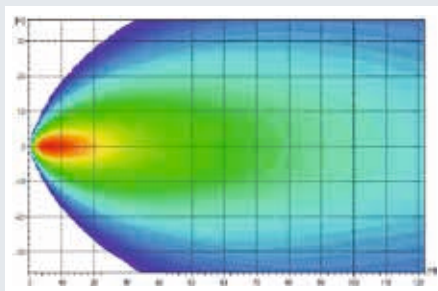
HELLA VALUEFIT brand products offer real added value at a price in line with the market. If you compare this cost-effective alternative from HELLA with similar competitor products, you will see that HELLA VALUEFIT offers you very good products with quality advantages.

All the spare parts meet the relevant technical specifications, are safe and reliable, and facilitate lower cost repairs. Shop smart with HELLA VALUEFIT tested quality at a good price!

	HELLA VALUEFIT S2500 LED	Competitors
Light output specified by the manufacturer	2500 lm	2160 lm
Measured light output	2476 lm	1264 lm
Power consumption	25 W	18 W
Voltage range	10–30 V	12–36 V
IP degree of protection	IP 6K9K	IP 69
Operating temperature	- 40 °C to + 50 °C	- 30 °C to + 50 °C
Salt spray resistance	240 h	Not tested
Thermal management	OK	OK
Approval	ECE R10	ECE R10

Isolux diagram

Mounting position: 2.5 m
Inclination: 5°



Conclusion

Good light efficiency, homogeneous light distribution

Weak light efficiency, heterogeneous light distribution



HELLA VALUEFIT

WORK LAMPS



R1500 LED

Upright/pendant surface mounting, multi-voltage 10 – 30 V, 9 LEDs, power consumption 15 W, light output 1,500 lm, degree of protection IP 6K9K, ECE R10 approval, connection 800 mm cable

W x H x D 107 mm x 133 mm x 41.5 mm

1G0 357 101-012 Close-range illumination



S1500 LED

Upright/pendant surface mounting, multi-voltage 10 – 30 V, 9 LEDs, power consumption 15 W, light output 1,500 lm, degree of protection IP 6K9K, ECE R10 approval, connection 800 mm cable

W x H x D 100 mm x 129 mm x 40 mm

1GA 357 103-012 Close-range illumination



R2200 LED

Upright/pendant surface mounting, multi-voltage 10 – 30 V, 14 LEDs, power consumption 25 W, light output 2,200 lm, degree of protection IP 6K9K, ECE R10 approval, connection 800 mm cable

W x H x D 114 mm x 137 mm x 41.5 mm

1G1 357 105-022 Large-area work illumination

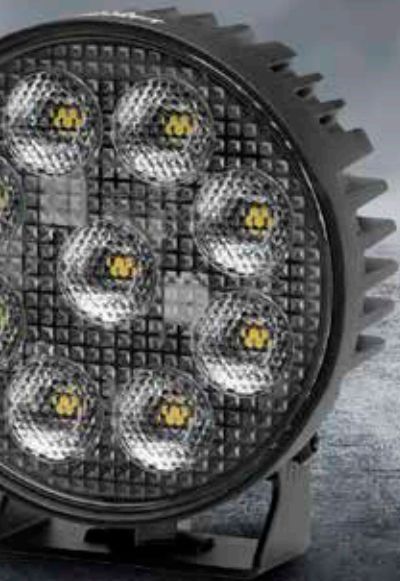


S2500 LED

Upright/pendant surface mounting, multi-voltage 10 – 30 V, 16 LEDs, power consumption 25 W, light output 2,500 lm, degree of protection IP 6K9K, ECE R10 approval, connection 800 mm cable

W x H x D 108 mm x 137 mm x 48 mm

1GA 357 106-022 Large-area work illumination



HELLA VALUEFIT



THERMAL MANAGEMENT SYSTEM

The new HELLA VALUEFIT work lamps have a new innovative thermal management system. This achieves an optimum light output depending on the ambient temperature and extends the service life of the work lamps.

* 1.000 lm		+50 °C
1.700 lm		+25 °C
2.000 lm		-40 °C
** 2.300 lm		+50 °C
3.000 lm		+25 °C
4.800 lm		-40 °C



PS1000 LED

NEW

Upright/pendant surface mounting, multi-voltage 10 – 30 V, 9 LEDs, power consumption 9 W, light output 1,000 lm, degree of protection IP 6K7/IP 6K9K, ECE R10 approval, connection 800 mm cable

i The first VALUEFIT work lamp with a plastic housing!

W x H x D 99.4 mm x 128.5 mm x 34 mm

1GA 357 114-002 Close-range illumination

Also available as a reverse lamp (see page 29).



TS1700 LED

NEW

Upright/pendant surface mounting, multi-voltage 10 – 30 V, 4 LEDs, power consumption 24 W, light output 1,700 lm, degree of protection IP 6K7/IP 6K9K, ECE R10 approval, connection 800 mm cable, thermal management system*

W x H x D 70.5 mm x 95 mm x 41 mm

1GA 357 110-002 Close-range illumination

Also available as a reverse lamp (see page 29).



TR1700 LED

NEW

Upright/pendant surface mounting, multi-voltage 10 – 30 V, 4 LEDs, power consumption 24 W, light output 1,800 lm, degree of protection IP 6K7/IP 6K9K, ECE R10 approval, connection 800 mm cable, thermal management system*

W x H x D 75.5 mm x 98 mm x 41 mm

1G0 357 111-002 Close-range illumination



S3000 LED

Upright/pendant surface mounting, multi-voltage 10 – 48 V, 9 LEDs, power consumption 30 W, light output 3,000 lm, degree of protection IP 67/IP 6K9K, ECE R10 approval, DEUTSCH DT connection, incl. 800 mm cable

W x H x D 100 mm x 123 mm x 73 mm

1GA 357 109-002 Close-range illumination

1GA 357 109-012 Long-range illumination

1GA 357 109-022 Close-range illumination (amber lens)



TS3000 LED

NEW

Upright/pendant surface mounting, multi-voltage 10 – 30 V, 9 LEDs, power consumption 54 W, light output 3,000 lm, degree of protection IP 6K7/IP 6K9K, ECE R10 approval, connection 800 mm cable, thermal management system**

W x H x D 101 mm x 114.5 mm x 45 mm

1GA 357 112-002 Close-range illumination



TR3000 LED

NEW

Upright/pendant surface mounting, multi-voltage 10 – 30 V, 9 LEDs, power consumption 54 W, light output 4,500 lm, degree of protection IP 6K7/IP 6K9K, ECE R10 approval, connection 800 mm cable, thermal management system**

W x H x D 109 mm x 120 mm x 45 mm

1G0 357 113-002 Close-range illumination

WORK LAMP/OFF ROAD



Black Magic Cube 2.7" **NEW**

LED auxiliary high beam headlamp, upright/pendant surface mounting, multi-voltage 10–30 V, power consumption 20 W, light output 1,400 lm, degree of protection IP 68/IP 69K, ECE type approval: ECE R10, connection 500 mm cable with DEUTSCH DT connection

W x H x D 2.7" x 2.8" x 2.4" / 70 mm x 72 mm x 60 mm

Set with 2 headlamps, short adapter cable harness, relay and switch

1FA 358 176-801 Close-range illumination

Individual headlamps

1FA 358 176-841 Close-range illumination



Black Magic Cube 3.2" **NEW**

LED auxiliary high beam headlamp, upright/pendant surface mounting, multi-voltage 10–30 V, power consumption 40 W, light output 3,000 lm, degree of protection IP 68/IP 69K, ECE type approval: ECE R10, connection 500 mm cable with DEUTSCH DT connection

W x H x D 3.2" x 3.3" x 3.0" / 81 mm x 83 mm x 78 mm

Set with 2 headlamps, short adapter cable harness, relay and switch

1FA 358 176-811 Close-range illumination

1FA 358 176-821 Long-range illumination

Individual headlamps

1FA 358 176-851 Close-range illumination

1FA 358 176-861 Long-range illumination



Black Magic Cube Flush mounting, 3.2" **NEW**

LED auxiliary high beam headlamp, flush mounting, multi-voltage 10–30 V, power consumption 20 W, light output 3,000 lm, degree of protection IP 68/IP 69K, ECE type approval: ECE R10, connection 500 mm cable with DEUTSCH DT connection

W x H x D 4.8" x 3.5" x 3.0" / 122 mm x 89 mm x 78 mm

1FA 358 176-831 Close-range illumination, set with 2 headlamps, short adapter cable harness, relay and switch



Black Magic Lightbar (Slim) 20" **NEW**

LED auxiliary high beam headlamp, upright/pendant surface mounting, multi-voltage 10–30 V, power consumption 105 W, light output max. 6,000 lm, degree of protection IP 68/IP 69K, 21 bright high-performance LEDs, ECE type approval: ECE R10, connection 2,000 mm cable with open ends

W x H x D 20.6" x 1.9" x 2.1" / 522 mm x 47 mm x 54.4 mm

1FJ 358 176-301 Auxiliary high beam headlamps



Black Magic Lightbar (Slim) 32" **NEW**

LED auxiliary high beam headlamp, upright/pendant surface mounting, multi-voltage 10–30 V, power consumption 165 W, light output max. 9,000 lm, degree of protection IP 68/IP 69K, 33 bright high-performance LEDs, ECE type approval: ECE R10, connection 2,000 mm cable with open ends

W x H x D 31.4" x 1.9" x 2.1" / 798 mm x 47 mm x 54.4 mm

1FJ 358 176-311 Auxiliary high beam headlamps



Black Magic Lightbar (Slim) 40" **NEW**

LED auxiliary high beam headlamp, upright/pendant surface mounting, multi-voltage 10–30 V, power consumption 210 W, light output max. 12,000 lm, degree of protection IP 68/IP 69K, 42 bright high-performance LEDs, ECE type approval: ECE R10, connection 2,000 mm cable with open ends

W x H x D 39.6" x 1.9" x 2.1" / 1,005 mm x 47 mm x 54.4 mm

1FJ 358 176-321 Auxiliary high beam headlamps



Black Magic Lightbar (Slim) 50" **NEW**

LED auxiliary high beam headlamp, upright/pendant surface mounting, multi-voltage 10–30 V, power consumption 270 W, light output max. 15,000 lm, degree of protection IP 68/IP 69K, 54 bright high-performance LEDs, ECE type approval: ECE R10, connection 2,000 mm cable with open ends

W x H x D 50.4" x 1.9" x 2.1" / 1,281 mm x 47 mm x 54.4 mm

1FJ 358 176-331 Auxiliary high beam headlamps



Black Magic Lightbar (Double) 21.5" **NEW**

LED auxiliary high beam headlamp, upright/pendant surface mounting, multi-voltage 10–30 V, power consumption 200 W, light output max. 11,000 lm, degree of protection IP 68/IP 69K, 40 bright high-performance LEDs, ECE type approval: ECE R10, connection 2,000 mm cable with open ends

W x H x D 23" x 3.4" x 2.7" / 580 mm x 86 mm x 68 mm

1FJ 358 176-401 Auxiliary high beam headlamps



Black Magic Mini Light Bars 6.2" **NEW**

LED auxiliary high beam headlamp, upright/pendant surface mounting, multi-voltage 10–30 V, power consumption 30 W, light output max. 1,600 lm, degree of protection IP 68/IP 69K, 6 bright high-performance LEDs, ECE type approval: ECE R10, connection 800 mm cable with open ends

W x H x D 6.2" x 2.0" x 2.4" / 157 mm x 50 mm x 60 mm

1FB 358 176-201 Close-range illumination

1FB 358 176-211 Long-range illumination



Black Magic Mini Light Bars 6.2" **NEW**

LED auxiliary high beam headlamp, flush mounting, multi-voltage 10–30 V, power consumption 30 W, light output max. 1,600 lm, degree of protection IP 68/IP 69K, 6 bright high-performance LEDs, ECE type approval: ECE R10, connection 800 mm cable with open ends

W x H x D 7.7" x 2.4" x 2.0" / 196 mm x 62 mm x 53 mm

1FB 358 176-221 Close-range illumination



Black Magic Cubes



Black Magic Lightbar

HELLA VALUEFIT

WORK LAMPS/OFF-ROAD



Light Bar LBX 220

Upright/pendant surface mounting, multi-voltage
9 – 33 V, 3 LEDs, power consumption 22 W, light output
1,000 lm, degree of protection IP 67, ECE R10 approval,
DEUTSCH DT connection, incl. 2,000 mm cable

W x H x D 209 mm x 98 mm x 80 mm, bracket width
244 – 264 mm

1GE 360 000-002 Close-range illumination



Light Bar LBX 540

Upright/pendant surface mounting, multi-voltage
9 – 33 V, 9 LEDs, power consumption 66 W, light output
3,500 lm, degree of protection IP 67, ECE R10 approval,
DEUTSCH DT connection, incl. 2,000 mm cable

W x H x D 539 mm x 98 mm x 80 mm, bracket width
574 – 594 mm

16J 360 002-002 Long-range illumination,
combination illumination



Light Bar LBX 380

Upright/pendant surface mounting, multi-voltage
9 – 33 V, 6 LEDs, power consumption 44 W, light output
2,000 lm, degree of protection IP 67, ECE R10 approval,
DEUTSCH DT connection, incl. 2,000 mm cable

W x H x D 374 mm x 98 mm x 80 mm, bracket width
409 – 429 mm

16J 360 001-002 Close-range illumination



Light Bar LBX 720

Upright/pendant surface mounting, multi-voltage
9 – 33 V, 12 LEDs, power consumption 88 W, light output
5,500 lm, degree of protection IP 67, ECE R10 approval,
DEUTSCH DT connection, incl. 2,000 mm cable

W x H x D 704 mm x 98 mm x 80 mm, bracket width
739 – 759 mm

16J 360 003-002 Long-range illumination,
combination illumination



AUXILIARY HIGH BEAM HEADLAMPS



LED Light Bar 470 PO

NEW

12/24 V, LED auxiliary high beam headlamp with LED position light, multi-voltage 9–33 V, power consumption for 12 V: position light 6 W/high beam 36 W, for 24 V: position light 6 W/high beam 36 W

W x H x D 528 mm x 57 mm x 67 mm

1FJ 958 140-001 ECE ref. 25



LED Light Bar 350

12/24 V, LED auxiliary high beam headlamp, with universal bracket, horizontal surface mounting, power consumption 25 W, 12 power LEDs

W x H x D 408 mm x 57 mm x 67 mm

1FJ 958 040-072 ECE ref. 20

1FJ 958 040-082 ECE ref. 30

HELLA VALUEFIT

AUXILIARY HIGH BEAM HEADLAMPS



Light Bar LBE 160 LED

Multi-voltage 12/24 V, LED auxiliary high beam headlamp, with 500 mm connecting cable and 2-pin DEUTSCH DT connection, horizontal surface mounting, upright surface mounting or flush mounting, power consumption 17 W, 3 bright high-performance LEDs, ECE type-approved: ECE R10 and ECE R112

W x H x D 158 mm x 73.5 mm x 92.1 mm (surface mounting)
196.1 mm x 73.9 mm x 92.1 mm (flush mounting)

1FE 358 154-011 ECE ref. 12.5



Light Bar LBE 320 LED

Multi-voltage 12/24 V, LED auxiliary high beam headlamp with position light, with 1,000 mm connecting cable and 3-pin DEUTSCH DT connection, horizontal surface mounting, upright surface mounting, power consumption 48 W, 6 bright high-performance LEDs, ECE type-approved: ECE R7, ECE R10 and ECE R112

W x H x D 311.3 mm x 82.6 mm x 72.5 mm

1FE 358 154-001 ECE ref. 30



Light Bar LBE 480 LED

Multi-voltage 12/24 V, LED auxiliary high beam headlamp with position light, with 1,000 mm connecting cable and 3-pin DEUTSCH DT connection, horizontal surface mounting, upright surface mounting, power consumption 53 W, 10 bright high-performance LEDs, ECE type-approved: ECE R7, ECE R10 and ECE R112

W x H x D 491.3 mm x 82.6 mm x 72.4 mm

1FE 358 154-021 ECE ref. 45



DLB 540 LED

12/24 V, LED auxiliary high beam headlamp, with stainless steel bracket set, horizontal surface mounting, upright/pendant surface mounting, infinitely adjustable, power consumption 66 W, 9 bright high-performance LEDs

W x H x D 539 mm x 98 mm x 80 mm, bracket width 574 – 594 mm

1FJ 360 002-502 ECE ref. 37.5



450 LED

Multi-voltage 12/24 V, LED auxiliary high beam headlamp with position light, horizontal surface mounting, upright/pendant surface mounting, power consumption 75 W, 15 bright high-performance LEDs, ECE type-approved: ECE R10 and ECE R112

W x H x D 162 mm x 148.85 mm x 56.5 mm

1FE 358 154-031 ECE ref. 12.5 with 800 mm connecting cable and 3-pin DEUTSCH DT connection

1FE 358 154-041 ECE ref. 12.5, with 500 mm connecting cable and black stone shield



Set 450 LED

Multi-voltage 12/24 V, LED auxiliary high beam headlamp with position light, with 800 mm connecting cable with 3-pin DEUTSCH DT connection and black stone shield, relay, switch, horizontal surface mounting, upright/pendant surface mounting, power consumption 75 W, 15 bright high-performance LEDs, ECE type approval: ECE R10 and ECE R112

W x H x D 162 mm x 148.85 mm x 56.5 mm per headlamp

1FE 358 154-051 Set, 2 headlamps, ECE ref. 12.5



AUXILIARY HIGH BEAM HEADLAMPS



Jumbo LED

NEW

12/24 V, LED auxiliary high beam headlamp, power consumption for 12 V: position light 1.3 W/high beam 8 W, for 24 V: position light 2.7 W/high beam 8 W

W x H x D 238 mm x 141 mm x 113 mm

With position light

1FE 016 773-001 ECE ref. 25, upright surface mounting

1FE 016 773-011 ECE ref. 25, pendant surface mounting

Without position light

1FE 016 773-101 ECE ref. 25, upright surface mounting

1FE 016 773-111 ECE ref. 25, pendant surface mounting



Rallye 3003 LED

12/24 V, LED auxiliary high beam headlamp with LED position light, upright surface mounting, power consumption for 12 V: position light 2.4 W/high beam 14.5 W, for 24 V: position light 5 W/high beam 14.5 W

W x H x D 222 mm x 242 mm x 124.2 mm

1F8 016 797-001 ECE ref. 25

1F8 016 797-011 ECE ref. 50



Luminator LED

12/24 V, LED auxiliary high beam headlamp with LED position light, upright surface mounting, power consumption for 12 V: position light 2.4 W/high beam 14.5 W, for 24 V: position light 5 W/high beam 14.5 W

W x H x D 222.4 mm x 232.5 mm x 129.6 mm

1F8 016 560-001 Metal, ECE ref. 25

1F8 016 560-011 Metal, ECE ref. 50

1F8 016 560-021 Chromium, ECE ref. 25

1F8 016 560-031 Chromium, ECE ref. 50



Luminator Chromium/Metal Celis

12/24 V, H1 high beam headlamp with Celis LED position light, upright surface mounting, power consumption 55/70 W

W x H x D 222.4 mm x 232.5 mm x 135 mm (Chromium)
222.4 mm x 232.5 mm x 129.6 mm (Metal)

1F8 007 560-201 Metal, ECE ref. 37.5

1F8 007 560-211 Chromium, ECE ref. 17.5



Headlamp insert (spare part) (for Luminator LED and Rallye 3003 LED)

LED high beam headlamp insert with LED position light for Luminator LED and Rallye 3003 LED, with accessories for electrical connection, mounting instructions

Also suitable for upgrading the Luminator Halogen and Rallye 3003 Halogen.

W x D 203 mm x 120.4 mm

1F8 241 400-011 With LED position light, ECE ref. 25

1F8 241 429-011 With LED position light, ECE ref. 50

WHAT DOES THE REFERENCE FIGURE SAY? WHAT DOES THE ISOLUX DIAGRAM SHOW?

The reference number (ref.) tells you what the maximum luminous intensity of a headlamp is | With the help of the reference number, you can find out quickly and easily how powerful a headlamp is. The reference number is obtained by converting the maximum luminous intensity in candela. It is a dimensionless number so it has no associated unit of measurement. The high-beam reference number and the ECE type approval are specified for every high beam headlamp. Two high beam headlamps with ref. 17.5 each result in ref. 35 together on the vehicle.

Which is better, a low or high reference number,? | High beam with a low reference number shines wide, but not as far as high beam with a high reference number. For long, straight stretches, high beam with a high reference number is therefore ideal. Winding areas, for example in the mountains, are better illuminated with a low reference number.

Please note the national regulations that apply in your country and check whether you are subject to the ECE regulation in force since 2009. In some countries, only a total high beam of 100 (reference value), i.e. the sum of all high beam headlamps on the vehicle, may be switched on.

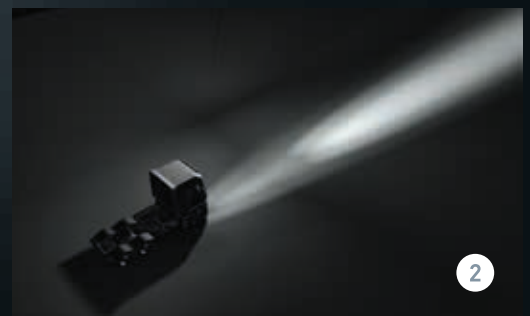
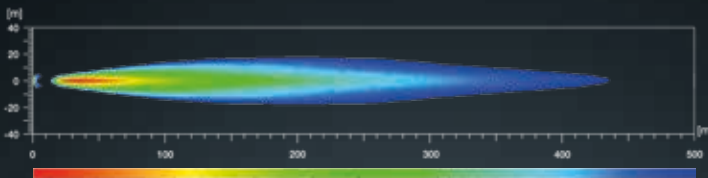
The Isolux diagram explains the light distribution of the headlamp. | A headlamp emits more intense light at close range than at a distance. The light effect decreases in length as well as in width. The Isolux diagram illustrates four important properties of high beam headlamps:

- What is the shape of the light cone?
- How far does it shine?
- How wide is the illumination?
- What intensity does the light have in which area?

Example of an Isolux diagram

All distances in metres. The different colours of the Isolux diagram provide information about the light intensity.

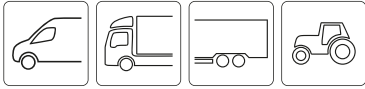
Red-orange: High illumination intensity. From yellow to green to blue, the illuminance decreases with distance.



1 Low reference number
Ideal for winding routes

2 High reference number
Ideal for straight routes

BEACONS



K-LED 2.0

Multi-voltage 10 – 32 V, automatic change between day and night mode, rotating or flashing light function, upright usage position, amber polycarbonate light dome, degree of protection IP 6K7/IP 6K9K, ECE R65 and ECE R10 approval, CISPR 25 Class 5

- 2XD 011 557-101 Fixed attachment
- 2XD 011 557-201 Pipe-socket mounting
- 2XD 011 557-301 Magnetic mounting

With black housing

- 2XD 011 557-841 Fixed attachment
- 2XD 011 557-811 Pipe-socket mounting



K-LED Blizzard

Multi-voltage 10 – 30 V, flashing light function, double flash signal, upright usage position, crystal clear polycarbonate light dome, amber LEDs, degree of protection IP 6K7/IP 6K9K, ECE R65 and ECE R10 approval, CISPR 25 Class 5

Successor to the K-LED FO!

- 2XD 012 980-001 Fixed attachment
- 2XD 012 980-011 Flexible pipe-socket mounting
- 2XD 012 980-021 Magnetic mounting



K-LED Rebelution

NEW

Multi-voltage 12/24 V, rotating or flashing light function, upright usage position, polycarbonate light ring, degree of protection IP 6K7/IP 6K9K, ECE R65 and ECE R10 approval, CISPR 25 Class 3 (rotating), CISPR 25 Class 5 (flashing)

- 2RL 455 256-001 Fixed attachment, rotating
- 2XD 455 255-001 Fixed attachment, flashing
- 2RL 455 256-011 Pipe-socket mounting, rotating
- 2XD 455 255-011 Pipe-socket mounting, flashing
- 2RL 455 256-021 Magnetic mounting, rotating
- 2XD 455 255-021 Magnetic mounting, flashing



KL 7000 LED

Multi-voltage 10 – 32 V, rotating light function, upright usage position, PMMA light dome, degree of protection IP 5K4K/IP X9K, ECE R65 and ECE R10 approval, CISPR 25 Class 5

- 2RL 011 484-001 Fixed attachment
- 2RL 011 484-011 Pipe-socket mounting
- 2RL 011 484-021 Magnetic mounting



Rota LED Compact

Multi-voltage 10 – 30 V, flashing or rotating light function, upright usage position, amber polycarbonate light dome, degree of protection IP 67/IP X9K, ECE R65 and ECE R10 approval, CISPR 25 Class 5

- 2XD 013 979-001 Fixed attachment, flashing
- 2RL 014 979-001 Fixed attachment, rotating
- 2XD 013 979-011 Flexible pipe-socket mounting, flashing
- 2RL 014 979-011 Flexible pipe-socket mounting, rotating
- 2XD 013 979-021 Magnetic mounting, flashing
- 2RL 014 979-021 Magnetic mounting, rotating



K-LED Nano

NEW

Multi-voltage 12/24 V, flashing light function, upright usage position, amber polycarbonate light dome, total current consumption approx. 1.6 A (12 V)/approx. 0.8 A (24 V), power consumption 15 W/max. 19 W, degree of protection IP 6K7/IP 6K9, ECE R65 and ECE R10 approval, CISPR 25 Class 5

- 2XD 066 146-001 Fixed attachment
- 2XD 066 146-011 Flexible pipe-socket mounting



Rota Compact

Halogen, 12/24 V, rotating light function, upright usage position, amber polycarbonate light dome, total current consumption and power consumption: approx. 5 A (12 V)/55 W; approx. 3 A (24 V)/70 W (H1), degree of protection IP 5K4K/IP 9K, ECE R65 and ECE R10 approval, CISPR 25 Class 3

- 2RL 009 506-201 Fixed attachment, 12 V
- 2RL 009 506-211 Fixed attachment, 24 V
- 2RL 009 506-001 Flexible pipe-socket mounting, 12 V
- 2RL 009 506-011 Flexible pipe-socket mounting, 24 V
- 2RL 009 506-101 Pipe-socket mounting, 12 V
- 2RL 009 506-111 Pipe-socket mounting, 24 V
- 2RL 009 506-301 Magnetic mounting, 12 V
- 2RL 009 506-311 Magnetic mounting, 24 V



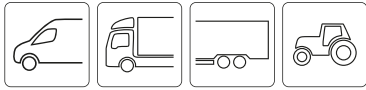
KL 700

Halogen, 24 V, rotating light function, upright usage position, amber PMMA light dome, total current consumption 2.9 A (24 V), power consumption 70 W (H1), degree of protection IP 5K4K/IP 9K, ECE R65 and ECE R10 approval

- 2RL 004 958-111 Fixed attachment, 24 V

HELLA VALUEFIT

BEACONS



Slim

NEW

Multi-voltage 10 – 30 V, flashing light function, single and double flash signal, upright usage position, amber polycarbonate light dome, total current consumption 2.1 A, power consumption approx. 10 W/max. 24 W, degree of protection IP 67/IP 69K, ECE R65 and ECE R10 approval

2XD 357 980-001 Fixed attachment

THE ECE R65 DIRECTIVE

Which beacons are approved for use on roads?

A beacon may only be used on public roads if it meets Directive ECE R65. ECE R65 is the European directive for beacons. It specifies the required light values, light distribution and fitting specifications, etc. The large E-approval mark (here ) shows whether the beacon meets the ECE R65 directive and therefore has approval.

Mounting in accordance with ECE R65 | The beacon (warning lamp) must be designed in such a way that it cannot be adjusted after it has been fitted correctly to the vehicle (ECE R65 5.2).

Light values in accordance with ECE R65 | The light values to be achieved are indicated by the effective luminous intensity. An amber rotating beacon must, for example, reach a luminous intensity of 70 cd (candela) at night at a vertical angle of + 8°.



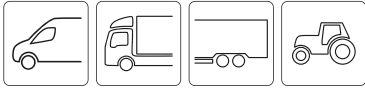
- 1 A for amber
- 2 E inspection tag
- 3 EMC test number
- 4 CE marking

Vertical angle	Amber beacon
0°	100 cd (night) 230 cd (day)
8°	70 cd

K-LED REBELUTION THE BEAUTY FOR YOUR BEAST



BEACONS



Micro Lightbar

NEW

Multi-voltage 10–30 V, user-defined flashing pattern: flashing and rotating light function, polycarbonate light dome, amber warning signal, amber cover lens, total current consumption approx. 6.2 A (12 V)/approx. 2.9 A (24 V), power consumption 66–72 W, degree of protection IP 6X/IP X4K/IP X9K, ECE R65 and ECE R10 approval, CISPR 25 Class 3

Amber cover lens

- 2RL 014 566-201** Screw mounting, with 500 mm connecting cable
- 2RL 014 566-211** Mounting by bracket, with 500 mm connecting cable
- 2RL 014 566-221** Magnetic mounting, with 2,500 mm connecting cable

Clear cover lens

- 2RL 014 566-001** Screw mounting, with 500 mm connecting cable
- 2RL 014 566-011** Mounting by bracket, with 500 mm connecting cable
- 2RL 014 566-021** Magnetic mounting, with 2,500 mm connecting cable



Mini Light Bar

NEW

Multi-voltage 10–30 V, user-defined flashing pattern: flashing and rotating light function, polycarbonate light dome, amber warning signal, amber cover lens, total current consumption approx. 6.1 A (12 V)/approx. 2.8 A (24 V), power consumption max. 70 W, degree of protection IP 6X/IP X4K/IP X9K, ECE R65 and ECE R10 approval, CISPR 25 Class 3

Amber cover lens

- 2RL 014 565-201** Screw mounting, with 500 mm connecting cable
- 2RL 014 565-211** Mounting by bracket, with 500 mm connecting cable
- 2RL 014 565-221** Magnetic mounting, with 2,500 mm connecting cable

Clear cover lens

- 2RL 014 565-001** Screw mounting, with 500 mm connecting cable
- 2RL 014 565-011** Mounting by bracket, with 500 mm connecting cable
- 2RL 014 565-021** Magnetic mounting, with 2,500 mm connecting cable

MICRO/MINI LIGHT BAR



- Multi-voltage function
- User-defined flashing patterns (flashing and rotating)
- Amber warning signal both with clear and amber lenses
- Polarity reversal protection
- Optimally protected against strong vibrations

The powerful LED warning lamps "Micro Light Bar" and "Mini Light Bar" generate an intensive 360° warning signal and are suitable for various applications. Both sizes of the light bar offer different design and mounting options and combine a flashing and rotating signal in one product. The Micro and Mini Light Bars are available with either a clear or amber lens, and the built-in LEDs are amber, meaning that the warning signal for both design variants are also amber.

Mounting variants



Screw attachment



Bracket mounting



Magnet mounting

SOS 360°



MOBILE WARNING LAMPS FOR CAR DRIVERS



SOS 360°

NEW

9 V, LED, 2 magnetically activated light functions, amber warning light, white working light, power consumption: 9 x 1 W (amber warning light), 18 x 0.5 W (white working light), 9 V battery 6LR61 550 mAh (not included in scope of delivery)

2XW 359 001-001 IP 54



HELLA 3003 warning lamp

6 V, with bulb B2 /4 W, certification symbol K13949, amber flashing safety light, white working light, with black fastening bracket and orange housing, battery operation (5 monocells, not included in scope of delivery)

2XW 007 146-001



WARNING LAMPS



BST Round

Multi-voltage 11 – 30 V, 4 LEDs, clear lens, amber signal colour, different flashing patterns, day/night mode, total current consumption 2.27 – 2.7 A (12 V)/1.27 – 1.37 A (24 V), power consumption 7 – 33 W, degree of protection for light module IP 6X, IP X4K, IP X9K, degree of protection for ballast IP X7, ECE R65 and ECE R10 approval, CISPR 25 Class 3

W x H x D 28.06 mm x 28.06 mm x 39.47 mm

2XD 014 564-211 Fixed attachment, 1 ballast, 2 light modules, 2 mounting rings



BST Slim (3 LEDs)

Multi-voltage 11 – 30 V, 3 LEDs, amber, continuous light and 4 different flashing patterns, 1 level, for horizontal surface mounting, total current consumption 0.7 A (12 V)/0.35 A (24 V), power consumption 6 – 9 W, degree of protection IP X7, IP X9K, ECE R65 and ECE R10 approval, CISPR 25 Class 5

W x H x D 89.3 mm x 32 mm x 12.8 mm

2XD 014 563-201 Fixed attachment, 2 pcs.



BST Slim (6 LEDs)

Multi-voltage 11 – 30 V, 6 LEDs, amber, continuous light and 4 different flashing patterns, day/night mode, for horizontal flush mounting, total current consumption 1.4 A (12 V)/0.7 A (24 V), power consumption 13 – 17 W, degree of protection IP X7, IP X9K, ECE R65 and ECE R10 approval, CISPR 25 Class 5

W x H x D 132 mm x 32 mm x 12.8 mm

2XD 014 562-201 Fixed attachment, 2 pcs.



BST-V Slim (6 LEDs)

Multi-voltage 11 – 30 V, 6 LEDs, amber, continuous light and 4 different flashing patterns, day/night mode, for vertical flush mounting, total current consumption 1.4 A (12 V)/0.7 A (24 V), power consumption 13 – 17 W, degree of protection IP X7, IP X9K, ECE R65 and ECE R10 approval, CISPR 25 Class 5

W x H x D 32 mm x 132 mm x 12.8 mm

2XD 014 592-201 Fixed attachment, 2 pcs.



BST
(3 LEDs)

Multi-voltage 11 – 30 V, 3 LEDs, amber, continuous light and 4 different flashing patterns, 1 level, for horizontal surface mounting, total current consumption 0.68 A (12 V)/0.34 A (24 V), power consumption 7 – 14 W, degree of protection IP 5K4K, IP 9K, IP 6K9K, ECE R65 and ECE R10 approval, CISPR 25 Class 3

W x H x D 85.98 mm x 27.66 x mm 15.91 mm (fixed attachment)
64.55 mm x 22.11 mm x 37.5 mm (bracket mounting)

- 2XD 014 561-201** Fixed attachment, 2 pcs.
- 2XD 014 561-401** Bracket mounting, 2 pcs.



BST
(6 LEDs)

Multi-voltage 11 – 30 V, 6 LEDs, amber, continuous light and 4 different flashing patterns, for horizontal surface mounting, total current consumption for 1 level 0.78 A (12 V)/0.40 A (24 V), day/night mode 1.1 A (12 V)/ 0.55 A (24 V), power consumption 7 – 14 W, degree of protection IP 5K4K, IP 9K, IP 6K9K, ECE R65 and ECE R10 approval, CISPR 25 Class 5

W x H x D 127.45 mm x 27.82 mm x 17.61 mm (fixed attachment)
107.11 mm x 22.11 mm x 42 mm (bracket mounting)

- 2XD 012 160-851** Fixed attachment, 1 level, 2 pcs.
- 2XD 014 560-201** Fixed attachment, day/night mode, 2 pcs.
- 2XD 012 160-861** Bracket mounting, 1 level, 2 pcs.
- 2XD 014 560-401** Bracket mounting, day/night mode, 2 pcs.



BST-V
(6 LEDs)

Multi-voltage 11 – 30 V, 6 LEDs, amber, continuous light and 4 different flashing patterns, 1 level, for vertical surface mounting, total current consumption 0.78 A (12 V)/0.40 A (24 V), power consumption 7 – 14 W, degree of protection IP 5K4K, IP 9K, IP 6K9K, ECE R65 and ECE R10 approval, CISPR 25 Class 5

W x H x D 27.82 mm x 127.45 x mm 17.61 mm (fixed attachment)
22.11 mm x 107.11 mm x 42 mm (bracket mounting)

- 2XD 012 160-951** Fixed attachment, 2 pcs.
- 2XD 012 160-961** Bracket mounting, 2 pcs.





REAR LAMPS



Full-LED truck rear lamp

LED, 24 V, Ⓢ 5884 approval, 9 lamp functions (reflex reflector, tail light, stop light, direction indicator light, licence plate light, rear fog light, reversing light, clearance light, side marker light), with pulse for direction indicator failure control, approved for vehicles in accordance with GGVS/ADR

W x H 403.5 mm x 158.9 mm

With 7-pin DIN bayonet connector

2VD 012 381-011¹⁾ Installation side left

2VP 012 381-021²⁾ Installation side right

With HDSCS, 8-pin (heavy duty sealed connector series), additional light function (wiping)

2VD 012 381-211³⁾ Installation side left

2VP 012 381-221⁴⁾ Installation side right

OE reference:

¹⁾ MAN 81.25225-6563; VW 2V5 945 095 D

²⁾ MAN 81.25225-6562; VW 2V5 945 096 D

³⁾ DAF 1981862

⁴⁾ DAF 1981861



Multi-function rear lamp

Halogen, 24 V, Ⓢ 63217 approval, 9 lamp functions (reflex reflector, tail light, stop light, direction indicator light, licence plate light, rear fog light, reversing light, clearance light, side marker light), with installed 24 V bulb and side central connector, approved for vehicles in accordance with GGVS/ADR

W x H 525 mm x 139 mm

2VD 007 500-411¹⁾ Installation side left

2VP 007 500-421²⁾ Installation side right, without licence plate and rear fog light

9EL 134 296-041 Lens, installation side left

9EL 134 296-051 Lens, installation side right

OE reference:

¹⁾ DAF 088 0196; and TP07002042; MERCEDES-BENZ

001 540 57 70 and 001 540 62 70; SCANIA 2 197 535

²⁾ DAF 088 0195; MERCEDES-BENZ 001 540 58 70 and 001 540 63 70; SCANIA 2 197 580



Multi-function rear lamp

Hybrid (halogen/LED), 24 V, Ⓢ 5855 and 5856 approval, 7 lamp functions (LED: tail light, stop light, clearance light / bulb: reflex reflector, direction indicator, rear fog light, reversing light), with 7-pin EasyConn plug connection and 4 x 2-pin connector, with pulse for direction indicator failure control, approved for vehicles in accordance with GGVS/ADR

W x H 450 mm x 138 mm

2VP 340 961-111 Installation side left

2VP 340 961-121 Installation side right

9EL 183 432-001 Lens, installation side left/right



EasyConn rear lamp

Halogen, 24 V, Ⓢ 10218 approval, 6 lamp functions (reflex reflector, tail light, stop light, direction indicator light, rear fog light, reversing light), without bulbs, cable entry via PG gland

W x H 370 mm x 130 mm

2VP 340 931-011¹⁾ Installation side left

2VP 340 931-001²⁾ Installation side right

9EL 340 829-031 Lens, installation side left

9EL 340 829-021 Lens, installation side right

OE reference:

¹⁾ KRONE 5819073/0

²⁾ KRONE 5819072/0



EasyConn rear lamp

Halogen, 24 V, Ⓢ 10218 approval, 7 lamp functions (reflex reflector, tail light, stop light, direction indicator light, rear fog light, reversing light, clearance light), without bulbs, cable entry via PG gland, approved for vehicles in accordance with GGVS/ADR

W x H 370 mm x 130 mm

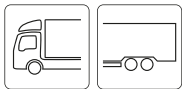
2VP 340 931-171¹⁾ Installation side left

2VP 340 931-161²⁾ Installation side right

OE reference:

¹⁾ KRONE 5819070/0; DAF 152 5204 and 196 4041

²⁾ KRONE 5819071/0; DAF 152 5203 and 196 4040



Multi-function rear lamp (with Krone logo)

Hybrid (halogen/LED), 24 V, Ⓢ 5855 and 5856 approval, 7 lamp functions (LED: Tail light, triangular reflex reflector, stop light/bulb: direction indicator, rear fog light, reversing light), with 7-pin EasyConn plug connection and 4 x 2-pin connector, with pulse for direction indicator failure control

W x H 450 mm x 146 mm

- 2VP 340 961-511¹⁾ Installation side left
- 2VP 340 961-521²⁾ Installation side right
- 2VP 340 961-531³⁾ Installation side left, with LED clearance light
- 2VP 340 961-541⁴⁾ Installation side right, with LED clearance light

OE reference:

- ¹⁾ DAF 2170853; KRONE 515072258; SCANIA 2841772
- ²⁾ DAF 2170854; KRONE 515072259; SCANIA 2841773
- ³⁾ DAF 2170855; KRONE 515072260; SCANIA 2841774
- ⁴⁾ DAF 2170856; KRONE 515072281; SCANIA 2841775



Rear lamp

Halogen, 24 V, Ⓢ 71 approval, 7 lamp functions (reflex reflector, tail light, stop light, direction indicator light, rear fog light, reversing light, side marker light), with installed 24 V bulbs

W x H 439 mm x 130 mm

- 2SK 340 101-011¹⁾ Left/right installation side, with 1,400 mm cable and 6-pin connector
- 2SK 340 101-031²⁾ Left/right installation side, without cable set
- 9EL 340 201-001 Lens, installation side left/right

OE reference:

- ¹⁾ SCHMITZ CARGOBULL ELO007-0004; SCHWARZMÜLLER 46823
- ²⁾ SCHMITZ CARGOBULL 000-40.070; DAF 090 6573; SCANIA 2 197 492



Multi-function rear lamp

Halogen, 24 V, Ⓢ 1072 approval, 7 lamp functions (reflex reflector, tail light, stop light, direction indicator light, rear fog light, reversing light, side marker light), with vibration damping, cable entry via PG gland, approved for vehicles in accordance with GGVS/ADR

W x H 440 mm x 148 mm

- 2VP 340 450-031 Installation side left
- 2VP 340 450-021 Installation side right
- 9EL 340 208-001 Lens, installation side left/right



Full-LED multi-function rear lamp

NEW

LED, 24 V, ECE 148R-00 5934, 5 lamp functions (tail light, stop light, direction indicator, reversing light, rear fog light), central 7-pin DIN bayonet connector, 2-pin AMP SUPERSEAL connector for auxiliary lighting functions, ballast according to DIN ISO 13207, IP 6K9K

W x H x D 410 mm x 150 mm x 55.5 mm

For trucks

- 2VP 340 970-701 Left/right installation side (flashing direction indicator light)
- 2VP 340 970-711 Left/right installation side (wiping direction indicator light)

For trailers

- 2VP 340 970-031 Left/right installation side (flashing direction indicator light)
- 2VP 340 970-041 Left/right installation side (wiping direction indicator light)



DuraLED

LED, 12/24 V, 5 lamp functions (reflex reflector, tail light, stop light, reversing light, direction indicator), for vehicles in accordance with GGVS /ADR, horizontal surface mounting

W x H 223 mm x 96 mm

With 2,500 mm cable

- 2VP 015 074-101 With direction indicator failure control
- 2VP 015 074-001 Without direction indicator failure control

With 6-pin DEUTSCH DT connection

- 2VP 015 075-101 With direction indicator failure control
- 2VP 015 075-001 Without direction indicator failure control



Full-LED rear lamp

NEW

LED, 12/24 V, 5 lamp functions (tail light, stop light, direction indicator, reversing light, rear fog light), for vehicles in accordance with GGVS/ADR, ECE R10 approval

W x H 224.5 mm x 104.5 mm

"Horizontal" version, 500 mm cable

- 2VP 328 630-011 Left/right installation side (wiping direction indicator light)

"Vertical" version, 500 mm cable

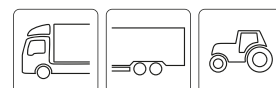
- 2VP 328 630-021 Left/right installation side (flashing direction indicator light)



REVERSE LAMPS

FUNCTION AND SAFETY

REVERSE LAMPS



Power Beam 1000

LED reverse lamp, upright/pendant surface mounting, multi-voltage 9 – 32 V, 6 LEDs, power consumption 14 W, light output 850 lm, degree of protection IP 6K9K, IP 6K8, ECE R10 and ECE R23 approval, CISPR 25 Class 5, aluminium housing

W x H x D 145 mm x 120 mm x 68 mm

2ZR 996 188-121 DEUTSCH DT connector



Power Beam 1000 compact

LED reverse lamp, upright/pendant surface mounting, multi-voltage 10.5 – 32 V, 6 LEDs, power consumption 12 W, light output 1,000 lm, degree of protection IP 6K9K, IP 6K7, ECE R10 and ECE R23 approval, CISPR 25 Class 5, corrosion-free plastic housing

W x H x D 112 mm x 126 mm x 68 mm

2ZR 996 188-521 DEUTSCH DT connector



Q90 LED compact

LED reverse lamp, upright/pendant surface mounting, multi-voltage 9 – 32 V, 4 LEDs, power consumption 15 W, light output 1,200 lm, degree of protection IP 6K9K/IP 6K7, ECE R10 and ECE R23 approval, CISPR 25 Class 5, heat conductive plastic housing

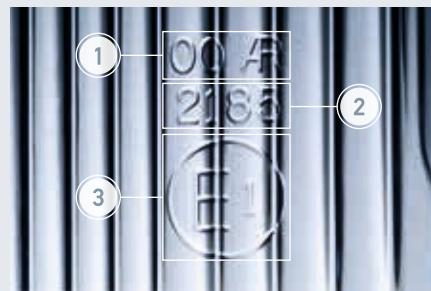
W x H x D 95 mm x 121 mm x 65 mm

2ZR 996 284-501 2,000 mm cable
2ZR 996 284-511 500 mm cable, DEUTSCH DT connector



IT'S ALL ABOUT THE MARKING

Not every work lamp may be used as a reverse lamp | Work lamps must meet specific criteria to pass ECE R23 homologation as reverse lamps. Reverse lamps from HELLA meet these criteria and so can be used on the roads. The special cover lenses direct the light beams to the sides specifically to enable optimum visibility when reversing.



The reverse lamp markings (on the cover lens):

- 1 **Type approval marking:** 00 AR stands for reverse lamp
- 2 **Type approval number:** The device may only be mounted as a reverse lamp if it has a type approval number (e.g. R23-003902)
- 3 **ECE marking:** With country code, e.g. 1 = Germany



ECO18 LED

LED reverse lamp, upright/pendant surface mounting, multi-voltage 10.5 – 32 V, 4 LEDs, power consumption 18 W, light output 1,350 lm, degree of protection IP 6K9K, IP 6K7, ECE R10 and ECE R23 approval, CISPR 25 Class 5, die-cast aluminium housing

W x H x D 98 mm x 145 mm x 70 mm

2ZR 996 479-501 500 mm cable

2ZR 996 479-511 DEUTSCH DT connector



Flat Beam 500

LED reverse lamp, upright/pendant surface mounting, multi-voltage 9 – 32 V, 4 LEDs, power consumption 7 W, light output 550 lm, degree of protection IP 6K9K/IP 6K7, ECE R10 and ECE R23 approval, CISPR 25 Class 5, glass-fibre-reinforced plastic housing

W x H x D 113 mm x 144 mm x 48 mm

2ZR 995 193-051 2,000 mm cable



Repulse Pro

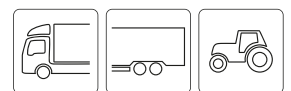
LED reverse lamp, upright, pendant or rear surface mounting, multi-voltage 10 – 32 V, 3 LEDs, power consumption 11 W, degree of protection IP 6K9K, ECE R10 and ECE R23 approval, CISPR 25 Class 5, plastic housing

W x H x D 110 mm x 110 mm x 48 mm

2ZR 012 456-221 3,500 mm cable and 6.3 mm flat receptacles



REVERSE LAMPS



Module 70 LED Gen. 3

LED reverse lamp, upright/pendant surface mounting, multi-voltage 9 – 32 V, 4 LEDs, power consumption 13 W, light output 800 lm, degree of protection IP 6K9K, IP 6K7, ECE R10 and ECE R23 approval, CISPR 25 Class 5, grey powder-coated aluminium housing

W x H x D 83 mm x 123 mm x 74 mm

2ZR 996 376-091 2,000 mm cable



Module 70 LED Gen. 3.2

LED reverse lamp, upright/pendant surface mounting, multi-voltage 9 – 32 V, 3 LEDs, power consumption 20 W, light output 1,800 lm, degree of protection IP 6K9K, IP 6K8, ECE R10 and ECE R23 approval, CISPR 25 Class 5, die-cast aluminium housing with CoroSafe coating

W x H x D 83 mm x 123 mm x 74 mm

2ZR 996 576-501 2,000 mm cable



Module 70 LED Gen. 3.2 compact

LED reverse lamp, upright/pendant surface mounting, multi-voltage 9 – 32 V, 12 LEDs, power consumption 13 W, light output 1,500 lm, degree of protection IP 6K9K, IP 6K8, ECE R10 and ECE R23 approval, CISPR 25 Class 5, corrosion-free plastic housing

W x H x D 83 mm x 119 mm x 74 mm

2ZR 996 576-621 2,000 mm cable



HELLA VALUEFIT

REVERSE LAMPS



PS1000 LED

NEW

Upright / pendant mounting, multi-voltage 10–30 V, 9 LEDs, power consumption 9 W, light output 1,000 lm, protection class IP 67 / IP 69K, ECE R10 approval, connection 800 mm cable; corrosion-free plastic housing

W x H x D 99.4 mm x 128.5 mm x 34 mm

ZZR 357 114-501 800 mm cable

Thermal management system

* 1.000 lm		+50 °C
1.700 lm		+25 °C
2.000 lm		-40 °C



TS1700 LED

NEW

Upright / pendant mounting, multi-voltage 10–30 V, 4 LEDs, power consumption 24 W, light output 1,700 lm, protection class IP 67 / IP 69K, ECE R10 approval, aluminium housing, thermal management system*

W x H x D 70.5 mm x 95 mm x 41 mm

ZZR 357 110-501 200 mm cable

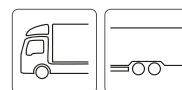
ZZR 357 110-511 3,000 mm cable

ZZR 357 110-521 200 mm cable, DEUTSCH DT connection

ZZR 357 110-531 200 mm cable with AMP SUPERSEAL



SINGLE-FUNCTION LAMPS



LED position lamp

24 V, 2 LEDs, power consumption 0.5 W, degree of protection IP 6K9K, Ⓢ 5881 approval, 2 lamp functions (position light with reflex reflector), with 500 mm cable, open end, approved for vehicles in accordance with GGVS/ADR

W x H 111.3 mm x 51.2 mm

2PG 345 600-401 Horizontal surface mounting



LED position lamp

24 V, 1 LED, power consumption 0.9 W, Ⓢ 1395 / Ⓢ 1398 approval, 2 lamp functions (position light with reflex reflector), with 500 mm cable, approved for vehicles in accordance with GGVS /ADR

W x H 130 mm x 32 mm

2PG 008 645-971 Horizontal and vertical surface mounting



LED tail lamp/clearance lamp

24 V, 2 LEDs, power consumption 1 W, degree of protection IP 6K9K, Ⓢ 9808 approval, 2 lamp functions (tail light with reflex reflector), with 5,000 mm cable, open end, approved for vehicles in accordance with GGVS/ADR

W x H 111.3 mm x 51.2 mm

2TM 345 600-317 Horizontal surface mounting



LED tail lamp

24 V, 1 LED, power consumption 1.2 W, Ⓢ 1395/Ⓢ 1398 approval, 2 lamp functions (tail light with reflex reflector, can also be used as a clearance lamp with reflex reflector), with 500 mm cable, approved for vehicles in accordance with GGVS/ADR

W x H 130 mm x 32 mm

2TM 008 645-951 Horizontal and vertical surface mounting



LED rubber arm clearance lamp (with integrated side marker lamp)

24 V, 4 LEDs, power consumption 1.8 W, degree of protection IP 6K9K, Ⓢ 11392 approval, 3 lamp functions (tail light, side marker light and position light), with 3,000 mm cable and flat receptacle 6.3 mm, approved for vehicles in accordance with GGVS/ADR

W x H 111.3 mm x 51.2 mm

2XS 011 744-031 Vertical surface mounting, left

2XS 011 744-041 Vertical surface mounting, right



Clearance lamp

12/24 V, power consumption 4 W, degree of protection IP 5K9K, Ⓢ 31407 approval, 1 lamp function (clearance light), bulb not included in scope of delivery, approved for vehicles in accordance with GGVS/ADR

W x H x D ¹⁾ 42 mm x 92 x 37 mm
²⁾ 42 mm x 116 x 43 mm

2XS 005 020-002¹⁾ Side/rear surface mounting

2XS 005 020-011²⁾ Side/rear surface mounting, with rubber pendulum 55 mm x 42 mm



LED side marker lamp

24 V, power consumption 1 W, Ⓢ 1319 approval, 2 lamp functions (side marker light with reflex reflector), degree of protection IP X9K, ECE R91, ECE R3 and ECE R10 approval

W x H x D ¹⁾ 116.2 mm x 32 mm x 17.8 mm
²⁾ 116.2 mm x 75.8 mm x 17.8 mm

2PS 329 060-091¹⁾ Left/right, cable harness with open end 100 mm, reference: Aspöck Unipoint I 31-2004-017

2PS 329 060-101²⁾ With bracket, cable harness with open end 100 mm, reference: Aspöck Unipoint I 31-2064-717



LED side marker lamp

24 V, power consumption 1.4 W, Ⓢ 1429 approval, 2 lamp functions (side marker light with reflex reflector), ECE R91, ECE R3 and ECE R10 approval

W x H 100 mm x 32 mm

2PS 008 643-011 Angle bracket, "crosswise" for clipping

2PS 008 643-021 Angle bracket, "longitudinal" for clipping

2PS 008 643-031 Angle bracket, "universal" for clipping



LED side marker lamp

24 V, 1 LED, power consumption 1.2 W, degree of protection IP 6K9K, Ⓢ 1395/Ⓢ 1396 approval, 2 lamp functions (side marker light with reflex reflector), ECE R91, ECE R3 and ECE R10 approval, approved for vehicles in accordance with GGVS/ADR

W x H 130 mm x 32 mm

2PS 008 645-001 Horizontal surface mounting, 1,500 mm cable

2PS 008 645-991 Vertical surface mounting, 1,500 mm cable

2PS 008 645-311 Horizontal surface mounting, 1,300 mm cable, 2-pin EasyConn connector

2PS 008 645-601 Horizontal surface mounting, 150 mm cable with Quick Link coupling including clamping piece for contacting a 2-wire flat cable

2PS 008 645-621 Horizontal surface mounting, 1,300 mm cable with Quick Link coupling including clamping piece for contacting a 2-wire flat cable



LED side marker lamp

24 V, 2 LEDs, power consumption 1.2 W, degree of protection IP 6K9K, Ⓢ 5881 approval, 2 lamp functions (side marker light with reflex reflector), with 500 mm cable, open end, approved for vehicles in accordance with GGVS/ADR

W x H 111.3 mm x 51.2 mm

2PS 345 600-011 Horizontal surface mounting, without bracket

2PS 345 600-071 Horizontal surface mounting, with bracket (angled to the rear)



LED licence plate lamp

24 V, 4 LEDs, power consumption 1 W, degree of protection IP 6K9K, Ⓢ 2609 approval, 1 lamp function (licence plate light), with white housing, surface mounting on the right or left next to the licence plate (520 mm x 120 mm), approved for vehicles in accordance with GGVS/ADR

W x H x D 66.2 mm x 93 mm x 63 mm

2KA 012 271-231 6.3 mm flat receptacles and 2,000 mm cable

2KA 012 271-271 2-pole EasyConn angle connector and 1,300 mm cable



LED licence plate lamp

24 V, 4 LEDs, power consumption 1 W, degree of protection IP 6K9K, Ⓢ 2609 approval, 1 lamp function (licence plate light), with black housing, surface mounting on the right or left next to the licence plate (520 mm x 120 mm), approved for vehicles in accordance with GGVS/ADR

W x H x D 66.2 mm x 93 mm x 63 mm

2KA 010 278-021 6.3 mm flat receptacles

2KA 010 278-031 6.3 mm flat receptacles and 2,000 mm cable



Licence plate lamp

Surface mounting, 12/24 V, power consumption 10 W, degree of protection IP 5K9K, Ⓢ 22819 approval, 1 lamp function (clearance light), bulb not included in scope of delivery, approved for vehicles in accordance with GGVS/ADR

W x H x D 56 mm x 102 mm x 55 mm

2KA 003 389-061 Left/right installation side



LED lifting platform direction indicator

24 V, 2 LEDs, power consumption 8.0 W, Ⓢ 6551 approval, 1 lamp function (direction indicator light), without pulse for direction indicator failure control, approved for vehicles in accordance with GGVS /ADR

W x H 100 mm x 97.5 mm

2BA 009 204-051 190 mm cable



LED interior lamp

Surface mounting, 12/24 V, power consumption 3.3 W, 1 lamp function (interior light), especially suitable for flat installation conditions

W x H x D ¹⁾ 140.7 mm x 82 mm x 18 mm
²⁾ 140.7 mm x 82 mm x 16 mm

2JA 012 557-001¹⁾ With motion sensor, 2,400 mm cable, degree of protection IP 54

2JA 012 557-012²⁾ Without motion sensor, 3,400 mm cable, degree of protection IP 69

HELLA VALUEFIT

SINGLE-FUNCTION LAMPS



LED position lamp

24 V, power consumption 0.4 W, approx. current consumption: 0.03 A (12 V)/0.015 A (24 V), E9 8114 approval, 1 lamp function (position light), degree of protection IP 67

W x H x D 65 mm x 16 mm x 11 mm

2PG 357 010-121 6.3 mm flat plug connection and 150 mm cable



LED auxiliary stop lamp

12 V, power consumption 2.5 W, E4 7981 approval, 1 lamp function (stop light)

W x H x D 284 mm x 30 mm x 20 mm

2DA 357 015-001 250 mm cable



LED clearance lamp

12/24 V, power consumption 1 W, E6 6754 approval, 2 lamp functions (position light with tail light)

W x H x D 86 mm x 67.2 mm x 44.3 mm

2XS 357 003-001 200 mm cable



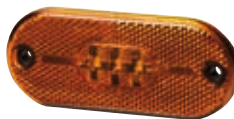
LED clearance lamp

12/24 V, power consumption 1.6 W, E9 6753 approval, 3 lamp functions (position light with tail light and side marker light)

W x H x D 148.6 mm x 143.7 mm x 61.5 mm

2XS 357 007-011 Left, side surface mounting 250 mm cable

2XS 357 007-021 Right, side surface mounting, 250 mm cable



LED side marker lamp

12 V, power consumption 0.5 W, E4 14802 approval, 2 lamp functions (side marker light with reflex reflector), degree of protection IP 67

W x H 108 mm x 44 mm

2PS 357 009-001 6.3 mm flat receptacles and 150 mm cable



LED side marker lamp

12/24 V, power consumption 1 W (12 V)/2 W (24 V), E6 1553 approval, 2 lamp functions (side marker light with reflex reflector), degree of protection IP 67

W x H x D ¹⁾ 111 mm x 51 mm x 20 mm
²⁾ 111 mm x 72.5 mm x 67 mm

2PS 357 008-001¹⁾ 150 mm cable

2PS 357 008-011²⁾ With bracket, 500 mm cable

ORDER NUMBER OVERVIEW

Part number	Product designation	Description	Page
WORK LAMPS			
1GA 995 606-001	Ultra Beam LED (Gen. 2)	Close-range illumination	7
1GA 995 606-011	Ultra Beam LED (Gen. 2)	Long-range illumination	7
1GA 996 488-001	Power Beam 1800 LED compact	Close-range illumination	7
1GA 996 488-011	Power Beam 1800 LED compact	Long-range illumination	7
1GA 996 284-001	Q90 LED compact	Close-range illumination	7
1GA 996 284-011	Q90 LED compact	Long-range illumination	7
1GA 996 588-001	S series Power Beam	Close-range illumination, ~ 1,000 lm/~ 12 W/2 LEDs	7
1GA 996 588-011	S series Power Beam	Long-range illumination, ~ 1,000 lm/~ 12 W/2 LEDs	7
1GA 996 588-201	S series Power Beam	Close-range illumination, ~ 1,850 lm/~ 19 W/4 LEDs	7
1GA 996 588-211	S series Power Beam	Long-range illumination, ~ 1,850 lm/~ 19 W/4 LEDs	7
1G0 996 776-001	70 S series module	Close-range illumination, ~ 1,000 lm/~ 12 W/2 LEDs	7
1G0 996 776-011	70 S series module	Long-range illumination, ~ 1,000 lm/~ 12 W/2 LEDs	7
1G0 996 776-201	70 S series module	Close-range illumination, ~ 1,850 lm/~ 19 W/4 LEDs	7
1G0 996 776-211	70 S series module	Long-range illumination, ~ 1,850 lm/~ 19 W/4 LEDs	7
HELLA VALUEFIT WORK LAMPS			
1G0 357 101-012	R1500 LED	Close-range illumination	10
1GA 357 103-012	S1500 LED	Close-range illumination	10
1G1 357 105-022	R2200 LED	Large-area work illumination	10
1GA 357 106-022	S2500 LED	Large-area work illumination	10
1GA 357 114-002	PS1000 LED	Close-range illumination	11
1GA 357 110-002	TS1700 LED	Close-range illumination	11
1G0 357 111-002	TR1700 LED	Close-range illumination	11
1GA 357 109-002	S3000 LED	Close-range illumination	11
1GA 357 109-012	S3000 LED	Long-range illumination	11
1GA 357 109-022	S3000 LED	Close-range illumination (amber lens)	11
1GA 357 112-002	TS3000 LED	Close-range illumination	11
1G0 357 113-002	TR3000 LED	Close-range illumination	11
WORKING LAMP/OFF-ROAD			
1FA 358 176-801	Black Magic Cubes 2.7"	Close-range illumination, set with 2 headlamps, short adapter cable harness, relay and switch	12
1FA 358 176-841	Black Magic Cubes 2.7"	Close-range illumination, individual headlamps	12
1FA 358 176-811	Black Magic Cubes 3.2"	Close-range illumination, set with 2 headlamps, short adapter cable harness, relay and switch	12
1FA 358 176-821	Black Magic Cubes 3.2"	Wide-ranging illumination, set with 2 headlamps, short adapter cable harness, relay and switch	12
1FA 358 176-851	Black Magic Cubes 3.2"	Close-range illumination, individual headlamps	12
1FA 358 176-861	Black Magic Cubes 3.2"	Long-range illumination, individual headlamps	12
1FA 358 176-831	Black Magic Cube flush mounting, 3.2"	Close-range illumination, set with 2 headlamps, short adapter cable harness, relay and switch	12
1FJ 358 176-301	Black Magic Lightbar (Slim) 20"	Auxiliary high beam headlamps	12
1FJ 358 176-311	Black Magic Lightbar (Slim) 32"	Auxiliary high beam headlamps	12
1FJ 358 176-321	Black Magic Lightbar (Slim) 40"	Auxiliary high beam headlamps	12
1FJ 358 176-331	Black Magic Lightbar (Slim) 50"	Auxiliary high beam headlamps	12
1FJ 358 176-401	Black Magic Light Bar (Double) 21.5"	Auxiliary high beam headlamps	12
1FB 358 176-201	Black Magic Mini Light Bar 6.2"	Close-range illumination	12
1FB 358 176-211	Black Magic Mini Light Bar 6.2"	Long-range illumination	12
1FB 358 176-221	Black Magic Mini Light Bar flush mounting, 6.2"	Close-range illumination	12
HELLA VALUEFIT WORKING LAMP/OFF-ROAD			
1GE 360 000-002	Light Bar LBX 220	Close-range illumination	13
1GJ 360 002-002	Light Bar LBX 540	Long-range illumination, combination illumination	13
1GJ 360 001-002	Light Bar LBX 380	Close-range illumination	13



ORDER NUMBER OVERVIEW

Part number	Product designation	Description	Page
1GJ 360 003-002	Light Bar LBX 720	Long-range illumination, combination illumination	13
AUXILIARY HIGH BEAM HEADLAMPS			
1FJ 958 140-001	LED Light Bar 470 PO	ECE ref. 25	14
1FJ 958 040-072	LED Light Bar 350	ECE ref. 20	14
1FJ 958 040-082	LED Light Bar 350	ECE ref. 30	14
1FE 016 773-001	Jumbo LED	ECE ref. 25, upright surface mounting, with position light	16
1FE 016 773-011	Jumbo LED	ECE ref. 25, pendant surface mounting, with position light	16
1FE 016 773-101	Jumbo LED	ECE ref. 25, upright surface mounting, without position light	16
1FE 016 773-111	Jumbo LED	ECE ref. 25, pendant surface mounting, without position light	16
1F8 016 797-001	Rallye 3003 LED	ECE ref. 25	16
1F8 016 797-011	Rallye 3003 LED	ECE ref. 50	16
1F8 016 560-001	Luminator LED	Metal, ECE ref. 25	16
1F8 016 560-011	Luminator LED	Metal, ECE ref. 50	16
1F8 016 560-021	Luminator LED	Chromium, ECE ref. 25	16
1F8 016 560-031	Luminator LED	Chromium, ECE ref. 50	16
1F8 007 560-201	Luminator Metal Celis	ECE ref. 37.5	16
1F8 007 560-211	Luminator Chromium Celis	ECE ref. 17.5	16
1F8 241 400-011	Headlamp insert (spare part) (for Luminator LED and Rallye 3003 LED)	With LED position light, ECE ref. 25	16
1F8 241 429-011	Headlamp insert (spare part) (for Luminator LED and Rallye 3003 LED)	With LED position light, ECE ref. 50	16
HELLA VALUEFIT AUXILIARY HIGH BEAM HEADLAMPS			
1FE 358 154-011	Light Bar LBE 160 LED	ECE ref. 12.5	15
1FE 358 154-001	Light Bar LBE 320 LED	ECE ref. 30	15
1FE 358 154-021	Light Bar LBE 480 LED	ECE ref. 45	15
1FJ 360 002-502	DLB 540 LED	ECE ref. 37.5	15
1FE 358 154-031	450 LED	ECE ref. 12.5 with 800 mm connecting cable and 3-pin DEUTSCH DT connection	15
1FE 358 154-041	450 LED	ECE ref. 12.5, with 500 mm connecting cable and black stone shield	15
1FE 358 154-051	Set 450 LED	Set, 2 headlamps, ECE ref. 12.5	15
BEACONS			
2XD 011 557-101	K-LED 2.0	Fixed attachment	18
2XD 011 557-201	K-LED 2.0	Pipe-socket mounting	18
2XD 011 557-301	K-LED 2.0	Magnetic mounting	18
2XD 011 557-841	K-LED 2.0	Fixed attachment, with black housing	18
2XD 011 557-811	K-LED 2.0	Pipe-socket mounting, with black housing	18
2XD 012 980-001	K-LED Blizzard	Fixed attachment	18
2XD 012 980-011	K-LED Blizzard	Flexible pipe-socket mounting	18
2XD 012 980-021	K-LED Blizzard	Magnetic mounting	18
2RL 455 256-001	K-LED Rebelution	Fixed attachment, rotating	18
2XD 455 255-001	K-LED Rebelution	Fixed attachment, flashing	18
2RL 455 256-011	K-LED Rebelution	Pipe-socket mounting, rotating	18
2XD 455 255-011	K-LED Rebelution	Pipe socket mounting, flashing	18
2RL 455 256-021	K-LED Rebelution	Magnetic mounting, rotating	18
2XD 455 255-021	K-LED Rebelution	Magnetic mounting, flashing	18
2RL 011 484-001	KL 7000 LED	Fixed attachment	18
2RL 011 484-011	KL 7000 LED	Pipe-socket mounting	18
2RL 011 484-021	KL 7000 LED	Magnetic mounting	18
2XD 013 979-001	Rota LED Compact	Fixed attachment, flashing	18
2RL 014 979-001	Rota LED Compact	Fixed attachment, rotating	18
2XD 013 979-011	Rota LED Compact	Flexible pipesocket mounting, flashing	18
2RL 014 979-011	Rota LED Compact	Flexible pipe-socket mounting, rotating	18
2XD 013 979-021	Rota LED Compact	Magnetic mounting, flashing	18

Part number	Product designation	Description	Page
2RL 014 979-021	Rota LED Compact	Magnetic mounting, rotating	18
BEACONS			
2XD 066 146-001	K-LED Nano	Fixed attachment	18
2XD 066 146-011	K-LED Nano	Flexible pipe-socket mounting	18
2RL 009 506-201	Rota Compact	Fixed attachment, 12 V	18
2RL 009 506-211	Rota Compact	Fixed attachment, 24 V	18
2RL 009 506-001	Rota Compact	Flexible pipe-socket mounting, 12 V	18
2RL 009 506-011	Rota Compact	Flexible pipe-socket mounting, 24 V	18
2RL 009 506-101	Rota Compact	Pipe-socket mounting, 12 V	18
2RL 009 506-111	Rota Compact	Pipe-socket mounting, 24 V	18
2RL 009 506-301	Rota Compact	Magnetic mounting, 12 V	18
2RL 009 506-311	Rota Compact	Magnetic mounting, 24 V	18
2RL 004 958-111	KL 700	Fixed attachment, 24 V	18
2RL 014 566-201	Micro Lightbar	Screw mounting, with 500 mm connecting cable, amber cover lens	20
2RL 014 566-211	Micro Lightbar	Mounting by bracket, with 500 mm connecting cable, amber cover lens	20
2RL 014 566-221	Micro Lightbar	Magnetic mounting, with 2,500 mm connecting cable, amber cover lens	20
2RL 014 566-001	Micro Lightbar	Screw mounting, with 500 mm connecting cable, clear cover lens	20
2RL 014 566-011	Micro Lightbar	Mounting by bracket, with 500 mm connecting cable, clear cover lens	20
2RL 014 566-021	Micro Lightbar	Magnetic mounting, with 2,500 mm connecting cable, clear cover lens	20
2RL 014 565-201	Mini Lightbar	Screw mounting, with 500 mm connecting cable, amber cover lens	20
2RL 014 565-211	Mini Lightbar	Mounting by bracket, with 500 mm connecting cable, amber cover lens	20
2RL 014 565-221	Mini Lightbar	Magnetic mounting, with 2,500 mm connecting cable, amber cover lens	20
2RL 014 565-001	Mini Lightbar	Screw mounting, with 500 mm connecting cable, clear cover lens	20
2RL 014 565-011	Mini Lightbar	Mounting by bracket, with 500 mm connecting cable, clear cover lens	20
2RL 014 565-021	Mini Lightbar	Magnetic mounting, with 2,500 mm connecting cable, clear cover lens	20
HELLA VALUEFIT BEACONS			
2XD 357 980-001	Slim	Fixed attachment	19
MOBILE WARNING LAMPS FOR CAR DRIVERS			
2XW 359 001-001	SOS 360°		21
2XW 007 146-001	HELLA 3003 warning lamp		21
WARNING LAMPS			
2XD 014 564-211	BST Round	Fixed attachment, 1 ballast, 2 light modules, 2 mounting rings	22
2XD 014 563-201	BST Slim (3 LEDs)	Fixed attachment, 2 pcs.	22
2XD 014 562-201	BST Slim (6 LEDs)	Fixed attachment, 2 pcs.	22
2XD 014 592-201	BST-V Slim (6 LEDs)	Fixed attachment, 2 pcs.	22
2XD 014 561-201	BST (3 LEDs)	Fixed attachment, 2 pcs.	23
2XD 014 561-401	BST (3 LEDs)	Bracket mounting, 2 pcs.	23
2XD 012 160-851	BST (6 LEDs)	Fixed attachment, 1 level, 2 pcs.	23
2XD 014 560-201	BST (6 LEDs)	Fixed attachment, day/night mode, 2 pcs.	23
2XD 012 160-861	BST (6 LEDs)	Bracket mounting, 1 level, 2 pcs.	23
2XD 014 560-401	BST (6 LEDs)	Bracket mounting, day/night mode, 2 pcs.	23
2XD 012 160-951	BST-V (6 LEDs)	Fixed attachment, 2 pcs.	23
2XD 012 160-961	BST-V (6 LEDs)	Bracket mounting, 2 pcs.	23
REAR LAMPS			
2VD 012 381-011	Full-LED truck rear lamp	Left installation side, with 7-pin DIN bayonet connector	24
2VP 012 381-021	Full-LED truck rear lamp	Right installation side, with 7-pin DIN bayonet connector	24
2VD 012 381-211	Full-LED truck rear lamp	Left installation side, with HDSCS, 8-pin (heavy duty sealed connector series), additional light function (wiping)	24
2VP 012 381-221	Full-LED truck rear lamp	Right installation side, with HDSCS, 8-pin (heavy duty sealed connector series), additional light function (wiping)	24
2VD 007 500-411	Multi-function rear lamp	Installation side left	24

ORDER NUMBER OVERVIEW

Part number	Product designation	Description	Page
2VP 007 500-421	Multi-function rear lamp	Installation side right, without licence plate and rear fog light	24
REAR LAMPS			
9EL 134 296-041	Multi-function rear lamp	Lens, installation side left	24
9EL 134 296-051	Multi-function rear lamp	Lens, installation side right	24
2VP 340 961-111	Multi-function rear lamp	Installation side left	24
2VP 340 961-121	Multi-function rear lamp	Installation side right	24
9EL 183 432-001	Multi-function rear lamp	Lens, installation side left/right	24
2VP 340 931-011	EasyConn rear lamp	Installation side left	24
2VP 340 931-001	EasyConn rear lamp	Installation side right	24
9EL 340 829-031	EasyConn rear lamp	Lens, installation side left	24
9EL 340 829-021	EasyConn rear lamp	Lens, installation side right	24
2VP 340 931-171	EasyConn rear lamp	Installation side left	24
2VP 340 931-161	EasyConn rear lamp	Installation side right	24
2VP 340 961-511	Multi-function rear lamp (with Krone logo)	Installation side left	25
2VP 340 961-521	Multi-function rear lamp (with Krone logo)	Installation side right	25
2VP 340 961-531	Multi-function rear lamp (with Krone logo)	Left installation side, with LED clearance light	25
2VP 340 961-541	Multi-function rear lamp (with Krone logo)	Right installation side, with LED clearance light	25
2SK 340 101-011	Rear lamp	Left/right installation side, with 1,400 mm cable and 6-pin connector	25
2SK 340 101-031	Rear lamp	Left/right installation side, without wiring set	25
9EL 340 201-001	Rear lamp	Lens, installation side left/right	25
2VP 340 450-031	Multi-function rear lamp	Installation side left	25
2VP 340 450-021	Multi-function rear lamp	Installation side right	25
9EL 340 208-001	Multi-function rear lamp	Lens, installation side left/right	25
2VP 340 970-701	Full-LED multi-function rear lamp	Left/right installation side (flashing direction indicator light), for truck	25
2VP 340 970-711	Full-LED multi-function rear lamp	Left/right installation side (wiping direction indicator light), for truck	25
2VP 340 970-031	Full-LED multi-function rear lamp	Left/right installation side (flashing direction indicator light), for trailer	25
2VP 340 970-041	Full-LED multi-function rear lamp	Left/right installation side (wiping direction indicator light), for trailer	25
2VP 015 074-101	DuraLED	With direction indicator failure control, with 2,500 mm cable	25
2VP 015 074-001	DuraLED	Without direction indicator failure control, with 2,500 mm cable	25
2VP 015 075-101	DuraLED	With direction indicator failure control, with 6-pin DEUTSCH DT connection	25
2VP 015 075-001	DuraLED	Without direction indicator failure control, with 6-pin DEUTSCH DT connection	25
2VP 328 630-011	Full-LED rear lamp	"Horizontal" version, 500 mm cable, left/right installation side (wiping direction indicator light)	25
2VP 328 630-021	Full-LED rear lamp	"Vertical" version, 500 mm cable, left/right installation side (flashing direction indicator light)	25
REVERSE LAMPS			
2ZR 996 188-121	Power Beam 1000	DEUTSCH DT connector	26
2ZR 996 188-521	Power Beam 1000 compact	DEUTSCH DT connector	26
2ZR 996 284-501	Q90 LED compact	2,000 mm cable	26
2ZR 996 284-511	Q90 LED compact	500 mm cable, DEUTSCH DT connector	26
2ZR 996 479-501	ECO18 LED	500 mm cable	27
2ZR 996 479 511	ECO18 LED	DEUTSCH DT connector	27
2ZR 995 193-051	Flat Beam 500	2,000 mm cable	27
2ZR 012 456-221	Repulse Pro	3,500 mm cable and 6.3 mm flat receptacles	27
2ZR 996 376-091	Module 70 LED Gen. 3	2,000 mm cable	28
2ZR 996 576-501	Module 70 LED Gen. 3.2	2,000 mm cable	28
2ZR 996 576-621	Module 70 LED Gen. 3.2 compact	2,000 mm cable	28
HELLA VALUEFIT REVERSE LAMPS			
2ZR 357 114-501	PS1000 LED	800 mm cable	29
2ZR 357 110-501	TS1700 LED	200 mm cable	29
2ZR 357 110-511	TS1700 LED	3,000 mm cable	29

Part number	Product designation	Description	Page
2ZR 357 110-521	TS1700 LED	200 mm cable, DEUTSCH DT connection	29
2ZR 357 110-531	TS1700 LED	200 mm cable with AMP SUPERSEAL	29
SINGLE-FUNCTION LAMPS			
2PG 345 600-401	LED position lamp	Horizontal surface mounting	30
2PG 008 645-971	LED position lamp	Horizontal and vertical surface mounting	30
2TM 345 600-317	LED tail lamp/clearance lamp	Horizontal surface mounting	30
2TM 008 645-951	LED tail lamp	Horizontal and vertical surface mounting	30
2XS 011 744-031	LED rubber arm clearance lamp (with integrated side marker lamp)	Vertical surface mounting, left	30
2XS 011 744-041	LED rubber arm clearance lamp (with integrated side marker lamp)	Vertical surface mounting, right	30
2XS 005 020-002	Clearance lamp	Side/rear surface mounting	30
2XS 005 020-011	Clearance lamp	Side/rear surface mounting, with rubber pendulum 55 mm x 42 mm	30
2PS 329 060-091	LED side marker lamp	Left/right, cable harness with open end 100 mm, reference: Aspöck Unipoint I 31-2004-017	31
2PS 329 060-101	LED side marker lamp	With bracket, cable harness with open end 100 mm, reference: Aspöck Unipoint I 31-2064-717	31
2PS 008 643-011	LED side marker lamp	Angle bracket, "crosswise" for clipping	31
2PS 008 643-021	LED side marker lamp	Angle bracket, "longitudinal" for clipping	31
2PS 008 643-031	LED side marker lamp	Angle bracket, "universal" for clipping	31
2PS 008 645-001	LED side marker lamp	Horizontal surface mounting, 1,500 mm cable	31
2PS 008 645-991	LED side marker lamp	Vertical surface mounting, 1,500 mm cable	31
2PS 008 645-311	LED side marker lamp	Horizontal surface mounting, 1,300 mm cable, 2-pin EasyConn connector	31
2PS 008 645-601	LED side marker lamp	Horizontal surface mounting, 150 mm cable with Quick Link coupling including clamping piece for contacting a 2-wire flat cable	31
2PS 008 645-621	LED side marker lamp	Horizontal surface mounting, 1,300 mm cable with Quick Link coupling including clamping piece for contacting a 2-wire flat cable	31
2PS 345 600-011	LED side marker lamp	Horizontal surface mounting, without bracket	31
2PS 345 600-071	LED side marker lamp	Horizontal surface mounting, with bracket (angled to the rear)	31
2KA 012 271-231	LED licence plate lamp	6.3 mm flat receptacles and 2,000 mm cable	31
2KA 012 271-271	LED licence plate lamp	2-pole EasyConn angle connector and 1,300 mm cable	31
2KA 010 278-021	LED licence plate lamp	6.3 mm flat receptacles	31
2KA 010 278-031	LED licence plate lamp	6.3 mm flat receptacles and 2,000 mm cable	31
2KA 003 389-061	Licence plate lamp	Left/right installation side	31
2BA 009 204-051	LED lifting platform direction indicator	190 mm cable	31
2JA 012 557-001	LED interior lamp	With motion sensor, 2,400 mm cable, degree of protection IP 54	31
2JA 012 557-011	LED interior lamp	Without motion sensor, 3,400 mm cable, degree of protection IP 69	31
HELLA VALUEFIT SINGLE-FUNCTION LAMPS			
2PG 357 010-121	LED position lamp	6.3 mm flat plug connection and 150 mm cable	32
2DA 357 015-001	LED auxiliary stop lamp	250 mm cable	32
2XS 357 003-001	LED clearance lamp	200 mm cable	32
2XS 357 007-011	LED clearance lamp	Left, side surface mounting, 250 mm cable	32
2XS 357 007-021	LED clearance lamp	Right, side surface mounting, 250 mm cable	32
2PS 357 009-001	LED side marker lamp	6.3 mm flat receptacles and 150 mm cable	32
2PS 357 008-001	LED side marker lamp	150 mm cable	32
2PS 357 008-011	LED side marker lamp	With bracket, 500 mm cable	32

ONLINE INFORMATION

FIND THE RIGHT PRODUCT WITH EASE

Our online information is designed to let you reliably and conveniently identify the latest HELLA products and find out all the important details. No matter what you are looking for, we are sure to have the right part in our range!



LIGHTSTYLE WEBSITE

The right light for every situation. Auxiliary headlamps from HELLA, find out more now!

www.hella.com/lightstyle



OFF-ROAD WEBSITE

For SUV and off-road enthusiasts – everything about vehicle lighting for off-road use.

www.hella.com/offroad



AGRICULTURE WEBSITE

Optimal solutions for agricultural use, especially for the requirements of agricultural, construction and forestry machines as well as special vehicles. Discover our product range.

www.hella.com/agriculture



TRUCK WEBSITE

Practical and informative. Everything surrounding vehicle lighting for the truck sector: Discover here what products and innovations HELLA has to offer in this area!

www.hella.com/truck



TRAILER WEBSITE

Informative, compact, interactive. Here you can find everything you need to know about products and technologies for commercial use.

www.hella.com/trailer







HELLA ONLINE CATALOGUE

The online universal parts catalogue offers you a quick and up-to-date overview of products in the categories of lighting, electrics and thermal management across a wide range of vehicles.

www.hella.com/upc



SOCIAL MEDIA

-  **LinkedIn** | Get in touch with us on our LinkedIn channel "HELLA Aftermarket" and find out everything about new products and current trends in the automotive industry.
-  **Instagram** | On Instagram, we connect on the community channel "@hella.experiences" with all those who have consciously chosen us and, therefore, quality products from HELLA for their vehicle, and who share this creatively and expressively with the whole world.
-  **Facebook** | Current information and promotions
-  **YouTube** | HELLA Videos



HELLA GmbH & Co. KGaA

Rixbecker Straße 75
59552 Lippstadt, Germany
Tel.: +49 2941 38-0
Fax: +49 2941 38-7133
Internet: www.hella.com

© HELLA GmbH & Co. KGaA, Lippstadt
J01800/05.23
Subject to technical and price modifications