

HELLA  
**VALUEFIT**



BLADE



# YOUR STYLE...

**... makes a statement - on the road and also off the road. Powerful performance, strong appearance: the new HELLA VALUEFIT Blade auxiliary headlamps.**

What do you prefer – round or square? White or amber? Black or with a chrome design ring? Whatever you decide – with the **HELLA VALUEFIT Blades**, you don't just get great visuals. The new range is available in 18 different versions, making it extremely flexible – with a suitable style for every vehicle. And you are spoilt for choice: they are available in 7" and 9" sizes and designs, a round or square shape, with low mounting depth, in white or amber and, of course, equipped with HELLA's innovative LED lighting technology. As usual, they are multi-voltage, making them suitable for 12 V and 24 V rated voltage and giving them electromagnetic compatibility. For on and off the roads – you decide!



# YOUR POSITION: RIGHT IN FRONT

**No matter where you are – whether on the road or next to it.**

The new **HELLA VALUEFIT Blade series** brings powerful light onto the roads and makes a statement on every vehicle thanks to its striking design – whether as a high beam with reference number 25 or 50, or as a position light. The round designs in the two sizes 7" and 9" are available with a chrome or black housing.

However, that's not all: For the first time, HELLA is launching an amber position light for off-road use. All round designs are therefore also available as a white-amber variant. The best part: you decide which colour it will be when you install it! The rectangular 9" version with chrome design ring is also available with either a white or amber position light.

You see: There's something for everyone - equip your truck hanger with majestic high performers or give your off-road vehicle a royal makeover.



## STREET



DRIVING  
LIGHT



POSITION  
LIGHT



DRIVING  
LIGHT



POSITION  
LIGHT

## OFFROAD ONLY



DRIVING  
LIGHT



POSITION  
LIGHT



DRIVING  
LIGHT



POSITION  
LIGHT



# THE CHOICE IS YOURS...

## ...rule the roads

The **HELLA VALUEFIT Blades** are the only emblem you need. The auxiliary headlamps combine innovative LED design with razor-sharp contours. The white blades in 7" or 9" accompany you confidently on public roads – as a high beam and position light in one.







### ... or rule off the road!

For the first time, all round and square 7" and 9" variants of the **HELLA VALUEFIT Blade series** are available with an optional amber position light – for an individual, attention-grabbing vehicle style. Unique style is accompanied by powerful performance. Exactly what you need when offroading!

# STRIKING FEATURES



**Get that extra wow factor –  
with the right accessories.**

The right cap for every position light. The headlamp covers for the **HELLA VALUEFIT Blade** are made especially for offroad use – matte black, easy to attach and securely held. And also unmistakable, thanks to the HELLA logo.

The clincher is that the position light design continues to be visible – it looks rather extravagant and can be seen at long distances.

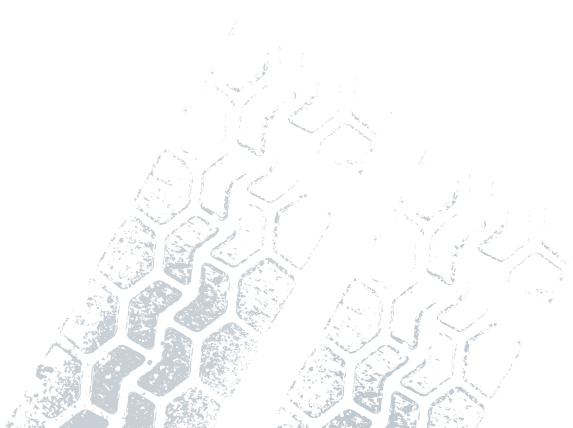




# IT DELIVERS WHAT IT PROMISES

## Resilience!

It stays planted on its throne: the **HELLA VALUEFIT Blades** are high-quality, robust auxiliary headlamps with a sturdy aluminium housing. Once mounted, they stay firmly in place thanks to their black screws. Nothing will throw the fibreglass fastening bracket off track in a hurry. They are attached upright, with one small exception: the rectangular HELLA VALUEFIT Chrome Blade RE 9" has an upright or pendant mounting option.





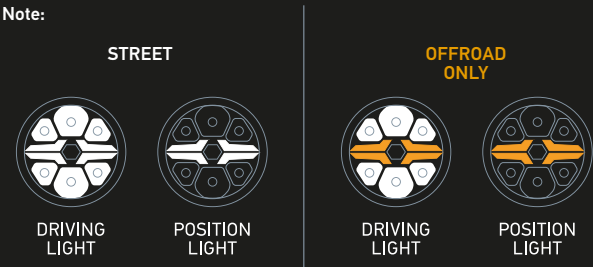
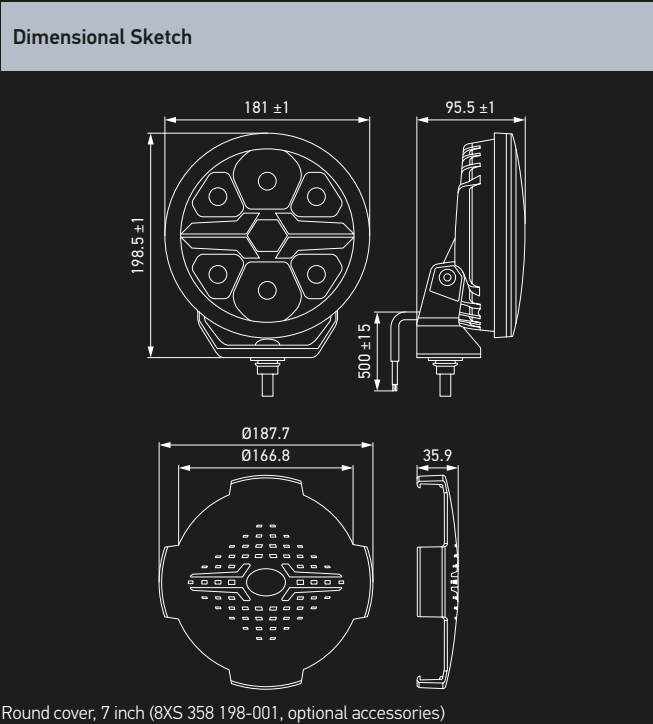
# TECHNICAL DETAILS

## BLADE 7 INCH ROUND



Technical Data	
Rated voltage	Multi-voltage
Operating voltage	12 – 24 V DC
Power consumption	22 W (ECE ref. 25), 36 W (ECE ref. 50)
Light function	Auxiliary high beam headlamp and PO light
Light source	LED
Colour temperature	6,000 K (headlamp)
Material	Housing: Aluminium Bezel: Plastic (ABS) Lens: PC (Polycarbonate) Bracket: Plastic / glass fibre PA66 + GF
Housing colour	Chrome or black
Weight	1,200 g
Temperature range	Ambient temperature: -30 °C to +60 °C Storage temperature: -40 °C to + 80 °C
Degree of protection	IP 69K, IP 67
Type approval	ECE R10 (EMC), R148,R149
Ref. no.	25 or 50
Number of LEDs	6
Mounting	Upright
Connection	500 mm cable with open ends
Application	Trucks in local, long-distance and construction traffic and SUVs, off-road vehicles, off-roaders

The AMBER position light does not have ECE approval: use may be limited to off-road areas off the public roads according to local regulations (see installation instructions).



## PROGRAM OVERVIEW

Product Image	Variant	Description	Position Light Colour	Part Number
	HELLA VALUEFIT Chrome Blade 7 inch round	22 W, ECE ref. 25	White	1FJ 357 198-001
		36 W, ECE ref. 50		1FJ 357 198-011
		22 W, ECE ref. 25	White or amber (connection optional)	1FJ 357 198-021
		36 W, ECE ref. 50		1FJ 357 198-031
	HELLA VALUEFIT Black Blade 7 inch round	22 W, ECE ref. 25	White	1FJ 357 198-041
		36 W, ECE ref. 50		1FJ 357 198-051
		22 W, ECE ref. 25	White or amber (connection optional)	1FJ 357 198-061
		36 W, ECE ref. 50		1FJ 357 198-071

# TECHNICAL DETAILS

## BLADE 9 INCH ROUND

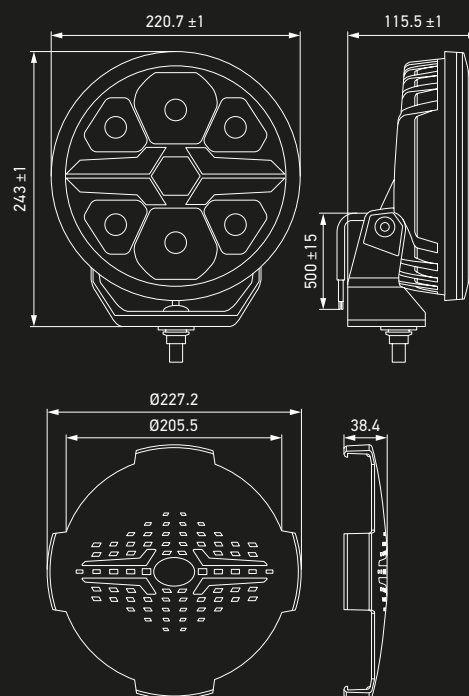


### Technical Data

Rated voltage	Multi-voltage
Operating voltage	12 – 24 V DC
Power consumption	17 W (ECE ref. 25), 18 W (ECE ref. 50)
Light function	Auxiliary high beam headlamp and PO light
Light source	LED
Colour temperature	6,000 K (headlamp)
Material	Housing: Aluminium Bezel: Plastic (ABS) Lens: PC (Polycarbonate) Bracket: Plastic / glass fibre PA66 + GF
Housing colour	Chrome or black
Weight	1,920 g
Temperature range	Ambient temperature: -30 °C to +60 °C Storage temperature: -40 °C to +80 °C
Degree of protection	IP 69K, IP 67
Type approval	ECE R10 (EMC), R148, R149
Ref. no.	25 or 50
Number of LEDs	6
Mounting	Upright
Connection	500 mm cable with open ends
Application	Trucks in local, long-distance and construction traffic and SUVs, off-road vehicles, off-roaders

The AMBER position light does not have ECE approval: use may be limited to off-road areas off the public roads according to local regulations (see installation instructions).

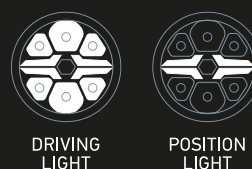
### Dimensional Sketch



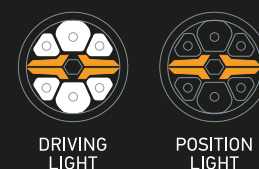
Round cover, 9 inch (8XS 358 198-011, optional accessories)

### Note:

#### STREET



#### OFFROAD ONLY



## PROGRAM OVERVIEW

Product Image	Variant	Description	Position Light Colour	Part Number
	HELLA VALUEFIT Chrome Blade 9 inch round	17 W, ECE ref. 25	White	1FJ 357 199-001
		18 W, ECE ref. 50		1FJ 357 199-011
		17 W, ECE ref. 25	White or amber (connection optional)	1FJ 357 199-021
		18 W, ECE ref. 50		1FJ 357 199-031
	HELLA VALUEFIT Black Blade 9 inch round	17 W, ECE ref. 25	White	1FJ 357 199-041
		18 W, ECE ref. 50		1FJ 357 199-051
		17 W, ECE ref. 25	White or amber (connection optional)	1FJ 357 199-061
		18 W, ECE ref. 50		1FJ 357 199-071

# TECHNICAL DETAILS

## BLADE RE 9 INCH RECTANGULAR

Approved

ECE

Approved

EMC

IP 69K

IP 67

Polarity Reversal Protection

Over-Voltage Protection

Vibration Resistant

CE Conformity

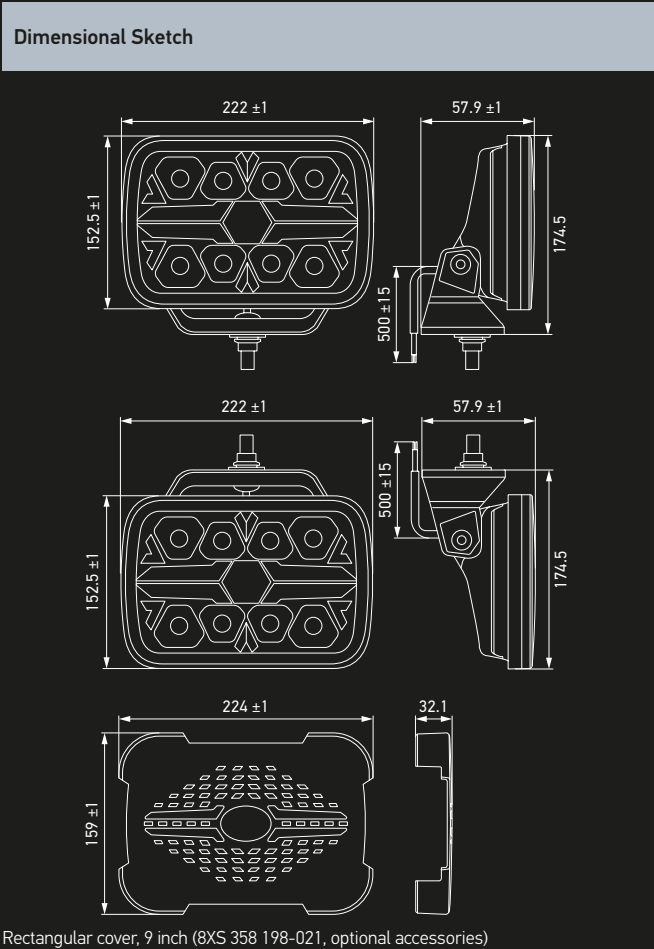
Power Supply

12-24VDC



Technical Data	
Rated voltage	Multi-voltage
Operating voltage	12 – 24 V DC
Power consumption	36 W
Light function	Auxiliary high beam headlamp and PO light
Light source	LED
Colour temperature	6,000 K (headlamp)
Material	Housing: Aluminium Bezel: Plastic (ABS) Lens: PC (Polycarbonate) Bracket: Plastic / glass fibre PA66 + GF
Housing colour	Chrome
Weight	1,550 g
Temperature range	Ambient temperature: -30 °C to +60 °C Storage temperature: -40 °C to + 80 °C
Degree of protection	IP 69K, IP 67
Type approval	ECE R10 (EMC), R148,R149
Ref. no.	25
Number of LEDs	8
Mounting	Upright or pendant
Connection	500 mm cable with open ends
Application	Trucks in local, long-distance and construction traffic and SUVs, off-road vehicles, off-rovers

The AMBER position light does not have ECE approval: use may be limited to off-road areas off the public roads according to local regulations (see installation instructions).



Note:




STREET		OFFROAD ONLY	
DRIVING LIGHT	POSITION LIGHT	DRIVING LIGHT	POSITION LIGHT

## PROGRAM OVERVIEW

Product Image	Variant	Description	Position Light Colour	Part Number
	HELLA VALUEFIT Chrome Blade RE 9 inch rectangular	Upright	White or amber (connection optional)	1FJ 357 199-081
		Pendant		1FJ 357 199-091



ACCESSORIES

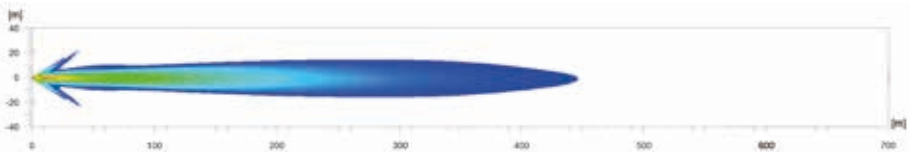
Product Image	Description	Part Number
	Protective caps with HELLA logo and translucent position light contour.	
	HELLA VALUEFIT Blade 7 inch, round cover	8XS 358 198-001
		
	HELLA VALUEFIT Blade 9 inch, round cover	8XS 358 198-011
		
	HELLA VALUEFIT Blade 9 inch, rectangular cover	8XS 358 198-021

In some countries, protective caps are not permitted by law. Before using them on public roads, please check with the relevant government authority.

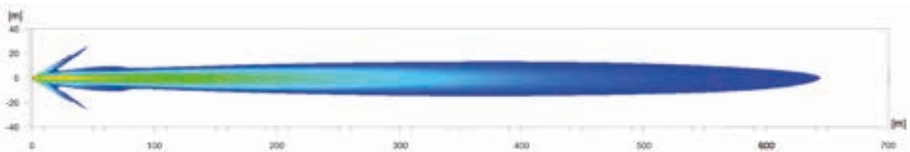
ILLUMINATION

The light distribution shows two operational headlamps.

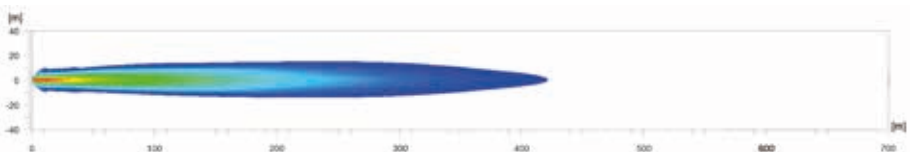
HELLA VALUEFIT Blade 7 inch round  
Reference number 25



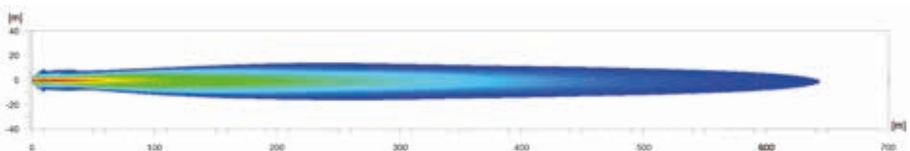
HELLA VALUEFIT Blade 7 inch round  
Reference number 50



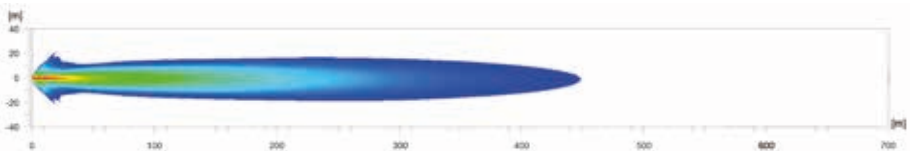
HELLA VALUEFIT Blade 9 inch round  
Reference number 25



HELLA VALUEFIT Blade 9 inch round  
Reference number 50



HELLA VALUEFIT Blade 9 inch rectangular  
Reference number 25



**HELLA GmbH & Co. KGaA**

Rixbecker Straße 75  
59552 Lippstadt, Germany  
Tel.: +49 2941 38-0  
Fax: +49 2941 38-7133  
Internet: [www.hella.com](http://www.hella.com)

© HELLA KGaA Hueck & Co., Lippstadt  
9Z2 999 143-657 J02156/KB/06.23/0.75  
Printed in Germany  
Subject to technical and price modifications.

